

NOTES:
-NONE.

CL

BOC WIND BREAK
LINSET 50
WHITE CYC
LINSET 48

7TH LEGS
LINSET 47

BLACK SCRIM
LINSET 44

6TH LEGS
LINSET 37

ACT 4 MOON
LINESET 32

MASKING WALL

5TH LEGS
LINSET 28

MASKING WALL

1/2 TRAV
LINSET 24

4TH LEGS
LINSET 20

GRAND HALL DOORS

3RD LEGS
LINSET 14

JUMP WINDOW

- STATUARY OR BUSHES/TOPIARY

2ND LEGS	
LINSET	10

1ST LEGS
LINESET 2

9'-8 $\frac{1}{4}$ '

23'-10'

- ACT 2 CHANDELIER
LINESET 14

9'-7 $\frac{3}{4}$ '

WEBER STATE OPERA

The Marriage of Figaro

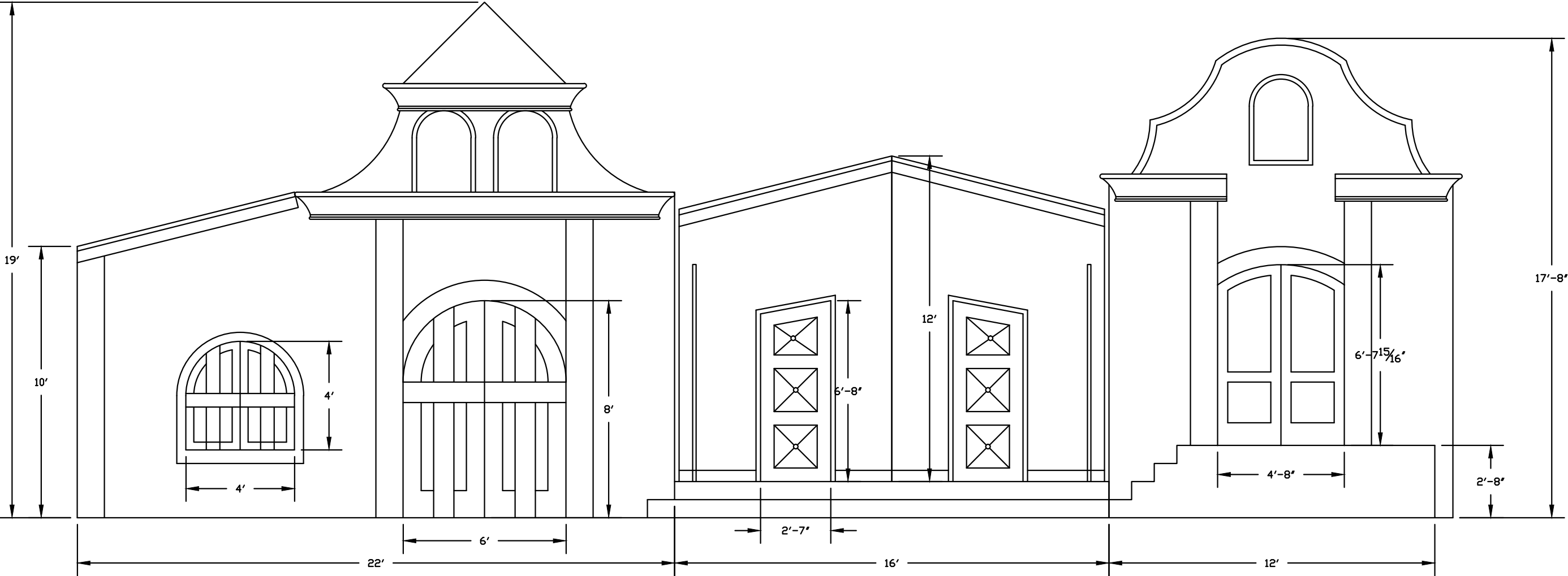
DIR. KAREN BRUESTLE
DES. BRYCE DALE ALLEN
T.D. CHRIS CARIGNAN
DFT. BRYCE DALE ALLEN

DRAWING #	
-----------	--

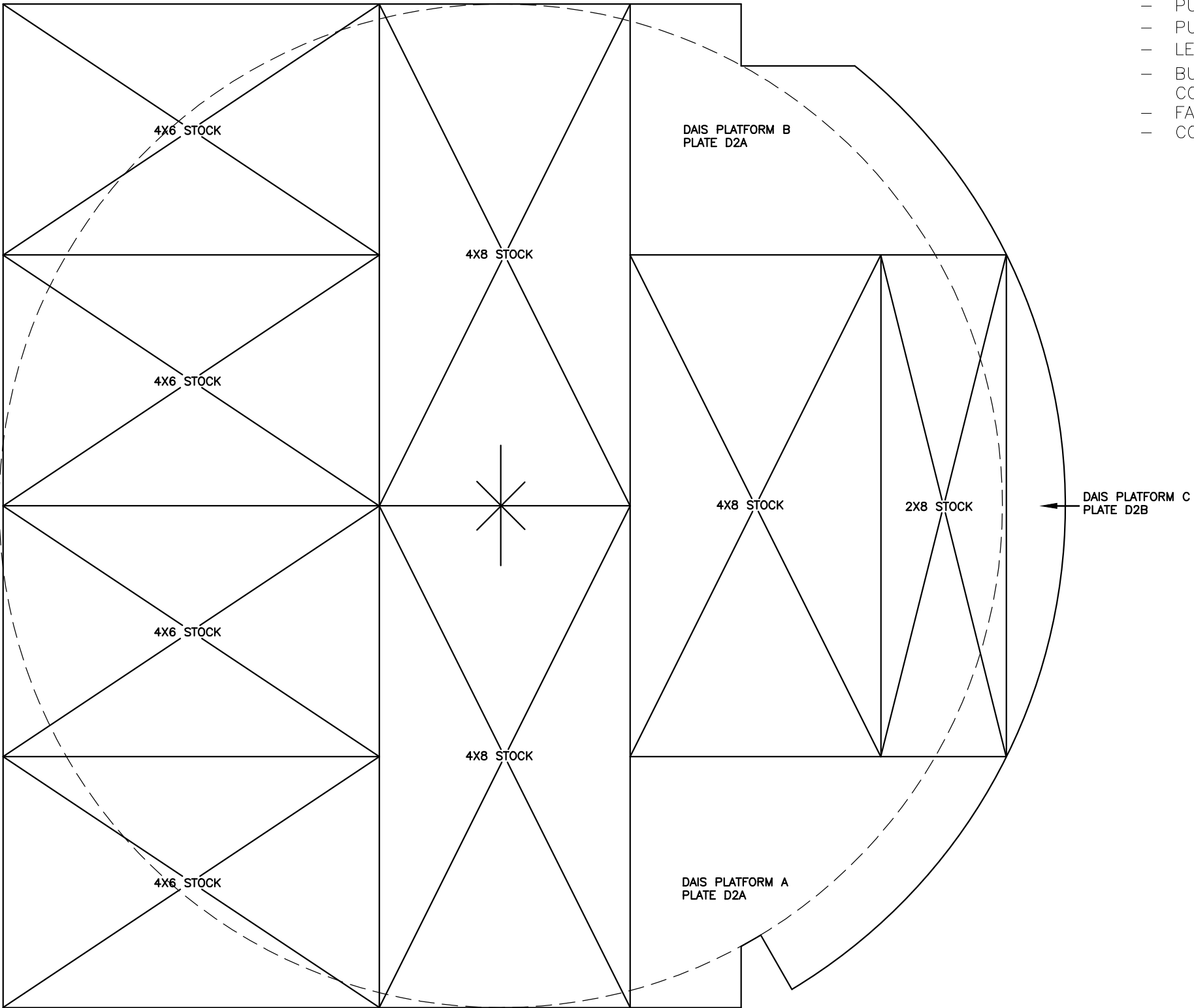
D 1

GROUND
PLAN
DATE: 1/05/17

NOTES:
—



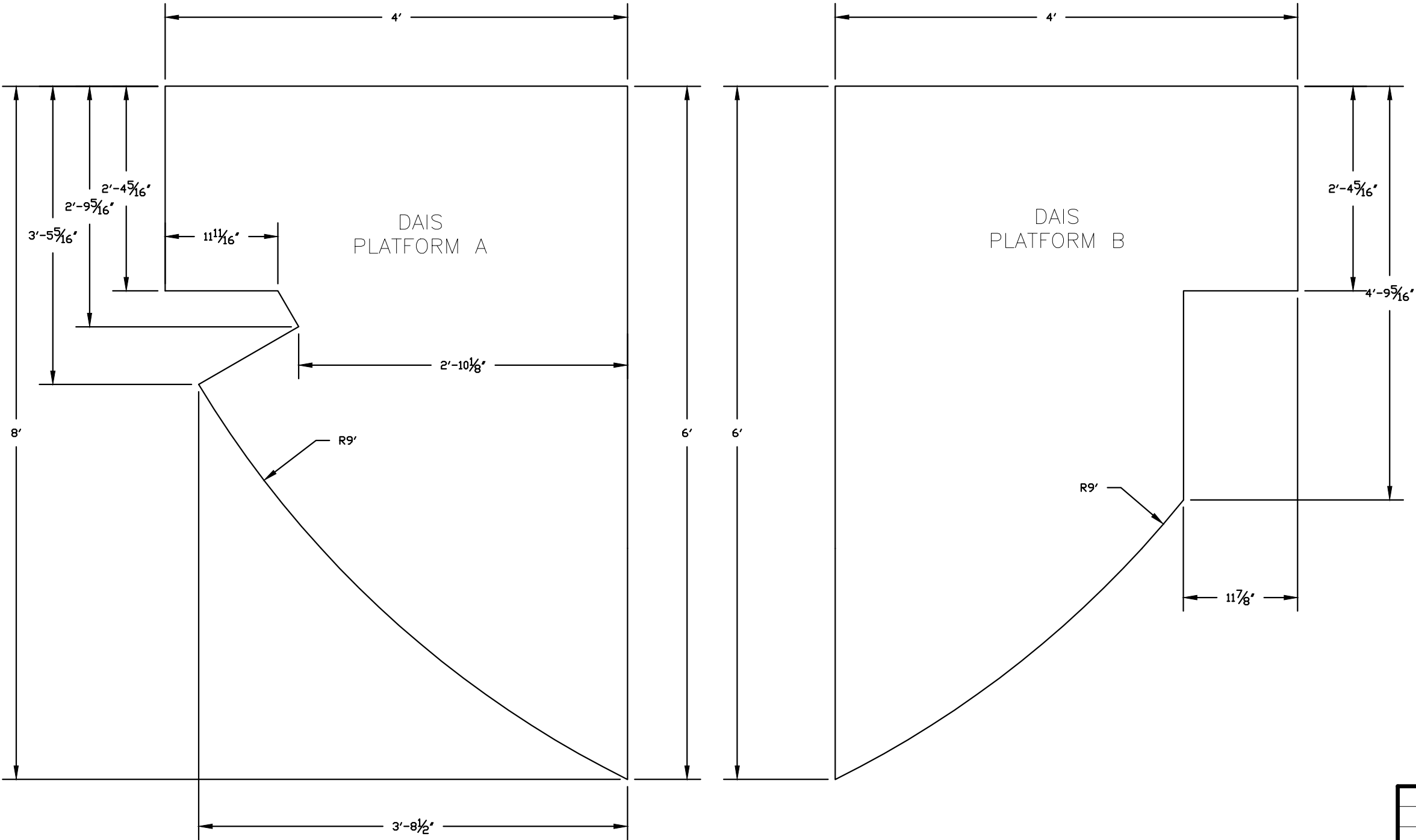
WEBER STATE UNIVERSITY	
THE MARRIAGE OF FIGARO	
FRONT FLAT ELEVATION	
DIR. KAREN BRUESTLE	DRAWING # D1 ELEVATION 2/13/17
DES. BRYCE DALE ALLEN	
T.D. CHRIS CARIGNAN	
DFT. BRYCE DALE ALLEN	
SCALE: 1/4" = 1'	APPROVED BY:



- NOTES:
- PULL 3 4'X8' STOCK PLATFORMS
 - PULL 4 4'X6' STOCK PLATFORMS
 - PULL 1 2'X8' STOCK PLATFORM
 - LEG ALL PLATFORMS TO 8"
 - BUILD THE REST STANDARD 2X4 AND $\frac{3}{4}$ " PLY CONSTRUCTION.
 - FACE DOWNSTAGE EDGE WITH LAUAN.
 - COVER WITH MASONITE.

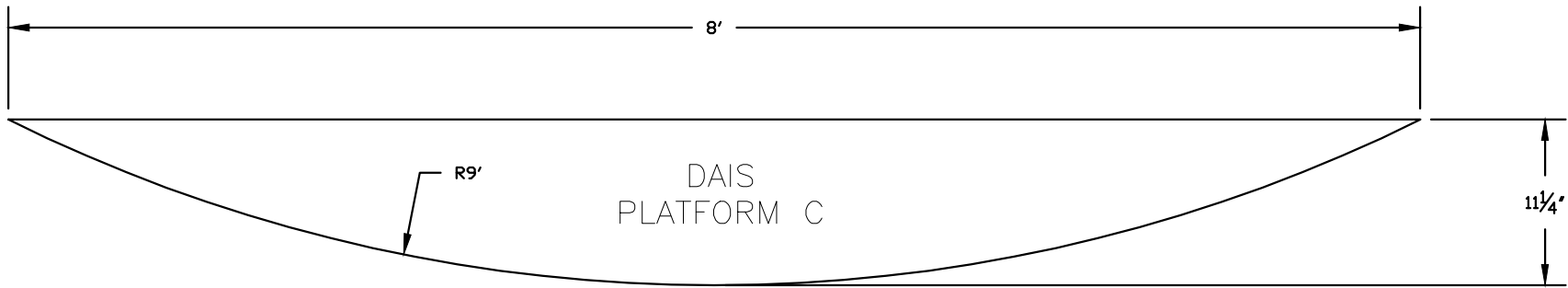
WEBER STATE OPERA		
<i>The Marriage of Figaro</i>		
TURN TABLE DIAS		
DIR. KAREN BRUESTLE	DRAWING # D2 PLATFORM DETAIL	DATE 2/16/17
DES. BRYCE DALE ALLEN		
T.D. CHRIS CARIGNAN		
DFT. BRYCE DALE ALLEN		
SCALE: 1/2" = 1'	APPROVED BY:	

- NOTES:
- LEG ALL PLATFORMS TO 8"
 - BUILD THE REST STANDARD 2X4 AND $\frac{3}{4}$ " PLY CONSTRUCTION.
 - USE ONE SHEET OF PLYWOOD TO BUILD BOTH PLATFORMS.

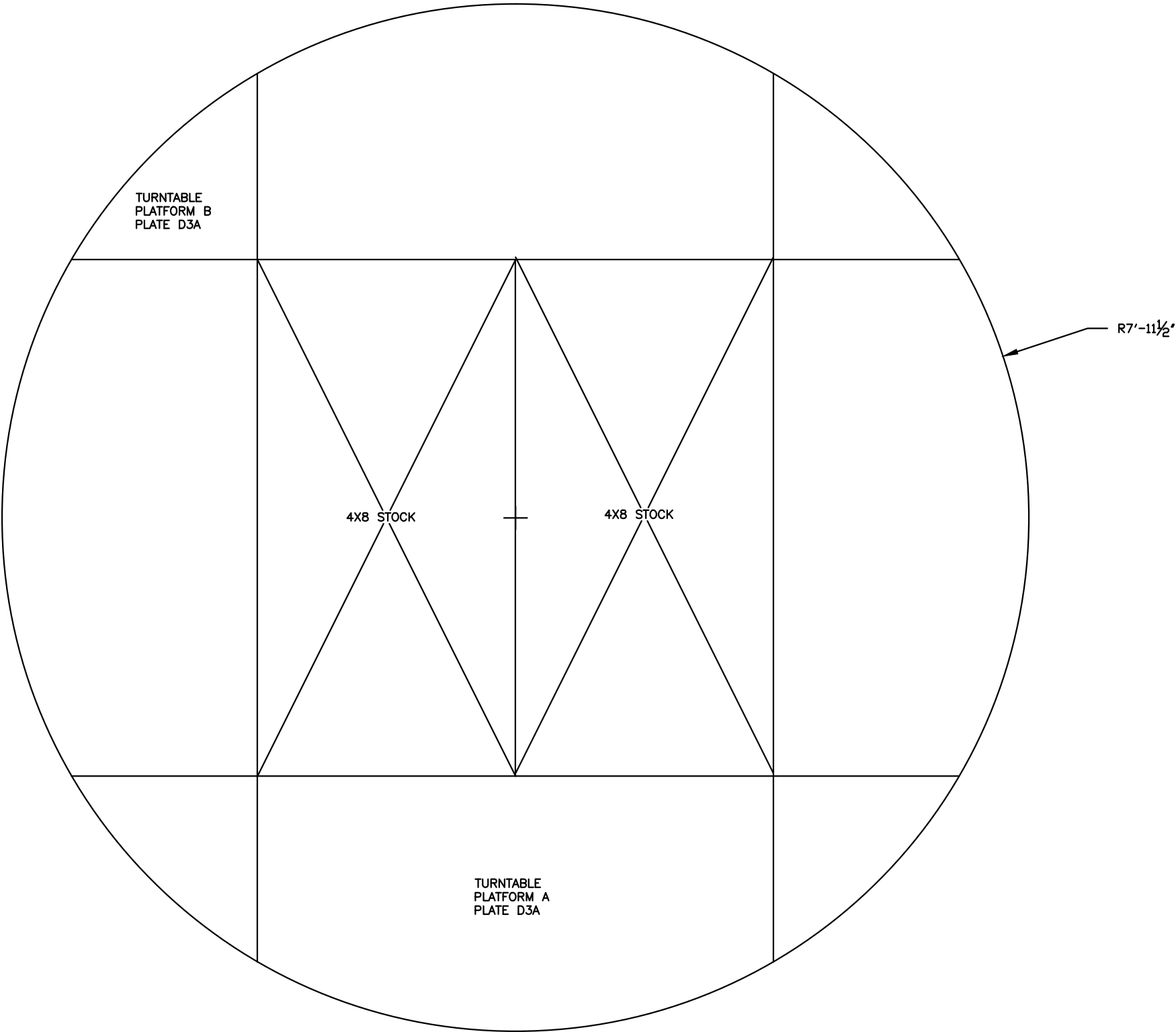


WEBER STATE OPERA		
<i>The Marriage of Figaro</i>		
TURN TABLE DAIS A AND B		
DIR. KAREN BRUESTLE	DRAWING # D2A PLATFORM DETAIL DATE 2/16/17	
DES. BRYCE DALE ALLEN		
T.D. CHRIS CARIGNAN		
DFT. BRYCE DALE ALLEN		
SCALE: 1" = 1'	APPROVED BY:	

- NOTES:
- LEG ALL PLATFORMS TO 8"
 - BUILD THE REST STANDARD 2X4 AND $\frac{3}{4}$ " PLY CONSTRUCTION.



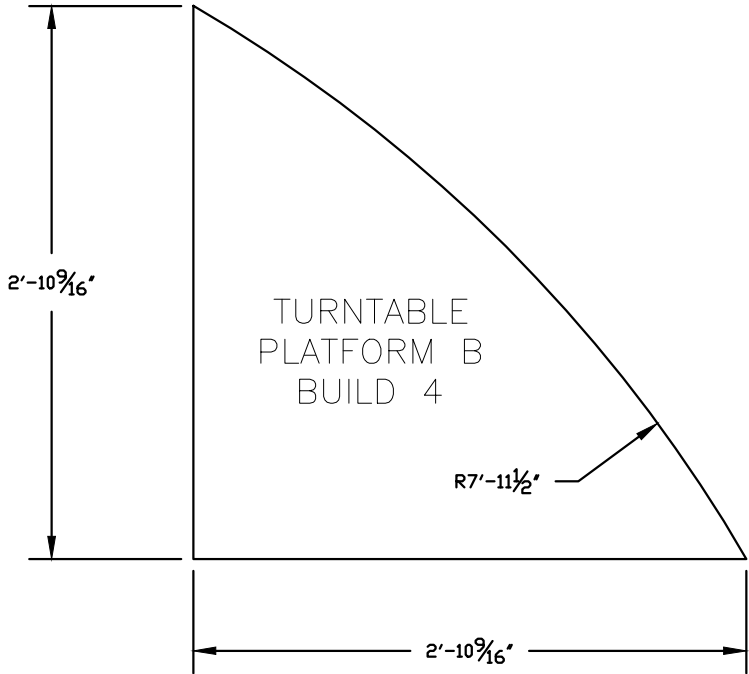
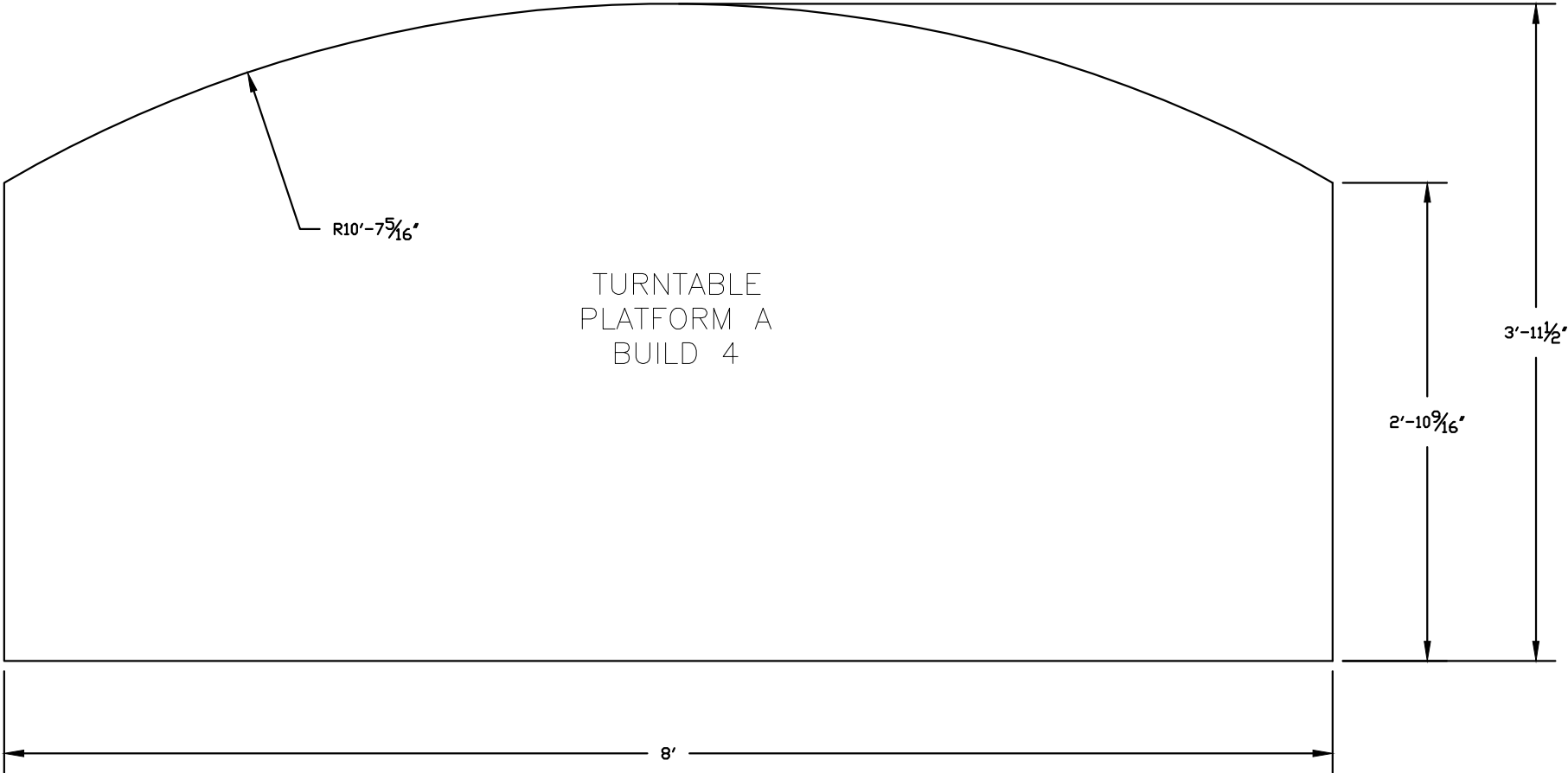
WEBER STATE OPERA		
<i>The Marriage of Figaro</i>		
TURN TABLE DAIS C, D & E		
DIR. KAREN BRUESTLE	DRAWING # D2B PLATFORM DETAIL DATE: 2/16/17	
DES. BRYCE DALE ALLEN		
T.D. CHRIS CARIGNAN		
DFT. BRYCE DALE ALLEN		
SCALE: 1" = 1'	APPROVED BY:	



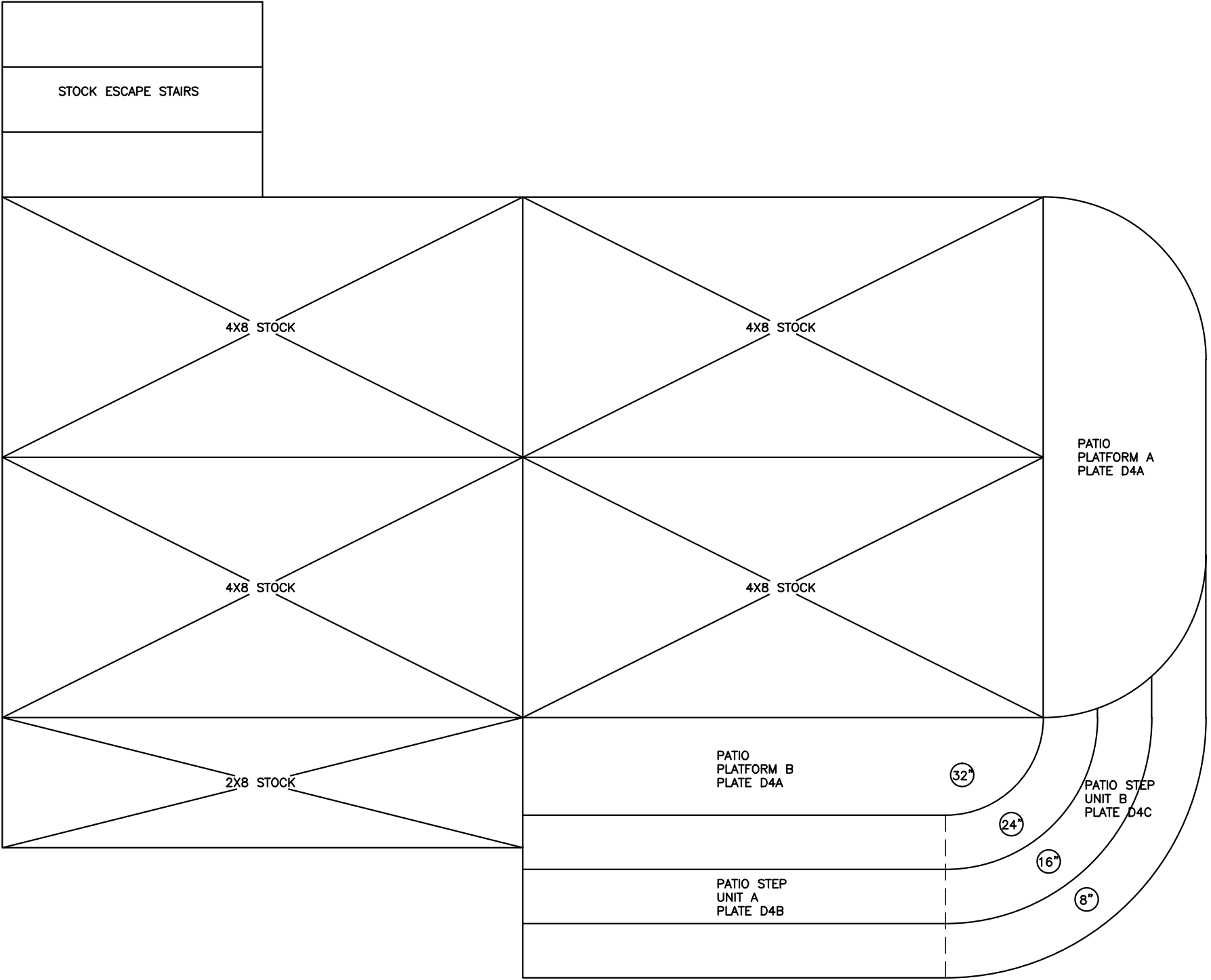
- NOTES:
- PULL 2 4'X8' GOOD STOCK PLATFORMS
 - BUILD THE REST STANDARD 2X4 AND $\frac{3}{4}$ " PLY CONSTRUCTION.
 - CASTER TO 8" WITH SMART CASTERS.
 - COVER WITH MASONITE.
 - FACE WITH LAUAN.

WEBER STATE OPERA		
<i>The Marriage of Figaro</i>		
TURNTABLE		
DIR. KAREN BRUESTLE	DRAWING # D3 PLATFORM DETAIL	DATE 2/16/17
DES. BRYCE DALE ALLEN		
T.D. CHRIS CARIGNAN		
DFT. BRYCE DALE ALLEN		
SCALE: 1/2" = 1'	APPROVED BY:	

- NOTES:
- CASTER ALL TURNTABLE PLATFORMS TO 8".
 - STANDARD 2X4 AND $\frac{3}{4}$ " PLY CONSTRUCTION.
 - BUILD 4 EACH.



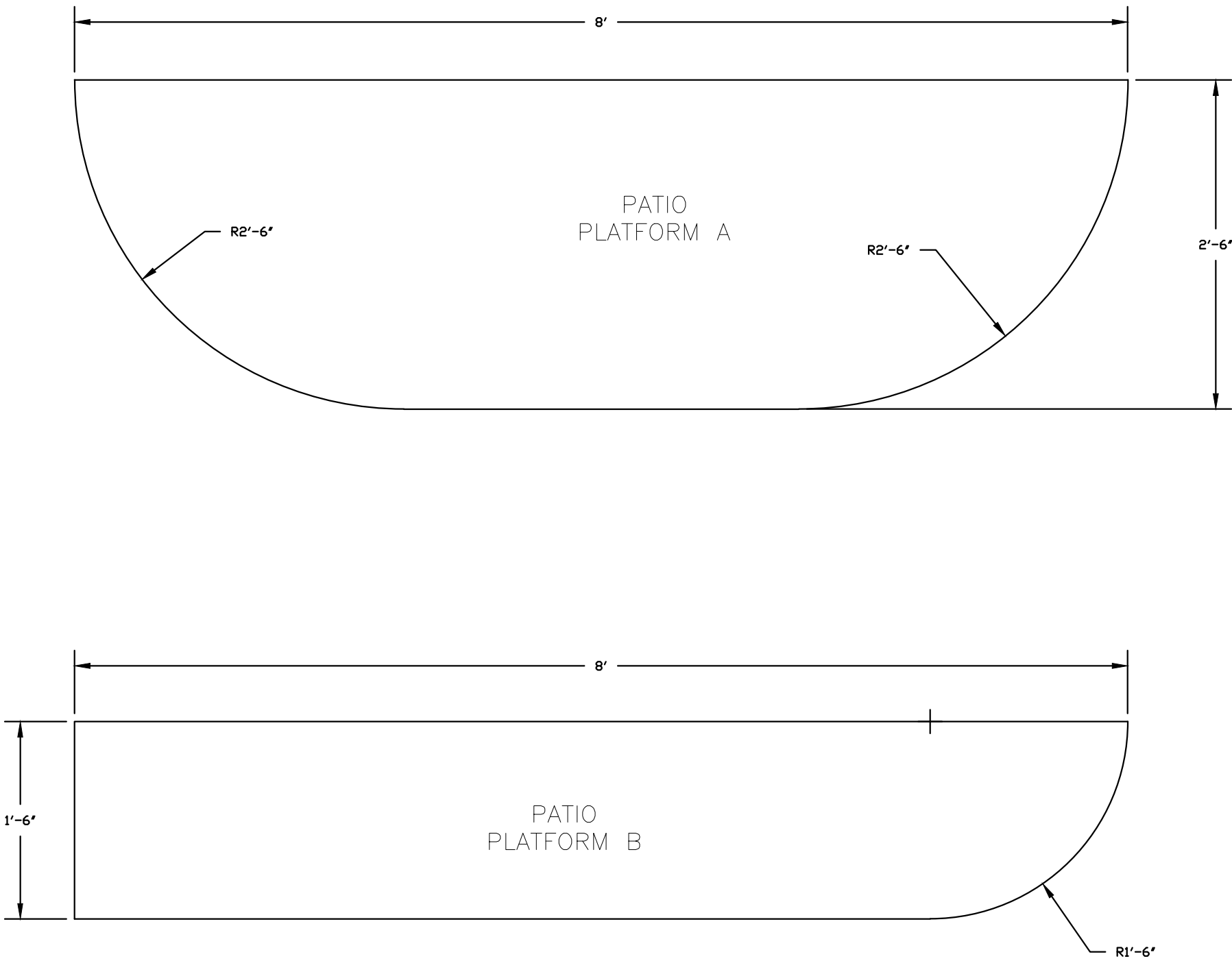
WEBER STATE OPERA			
<i>The Marriage of Figaro</i>			
TURNTABLE PLATFORM A AND B			DRAWING # D3A PLATFORM DETAIL
DIR. KAREN BRUESTLE			
DES. BRYCE DALE ALLEN			
T.D. CHRIS CARIGNAN			
DFT. BRYCE DALE ALLEN			
SCALE: 1" = 1'	APPROVED BY:		DATE: 2/16/17



- NOTES:
- PULL 4 4'X8' STOCK PLATFORMS
 - PULL 1 2'X4' STOCK PLATFORM
 - BUILD THE REST STANDARD 2X4 AND $\frac{3}{4}$ " PLY CONSTRUCTION.
 - COVER WITH MASONITE.
 - FACE WITH LAUAN.

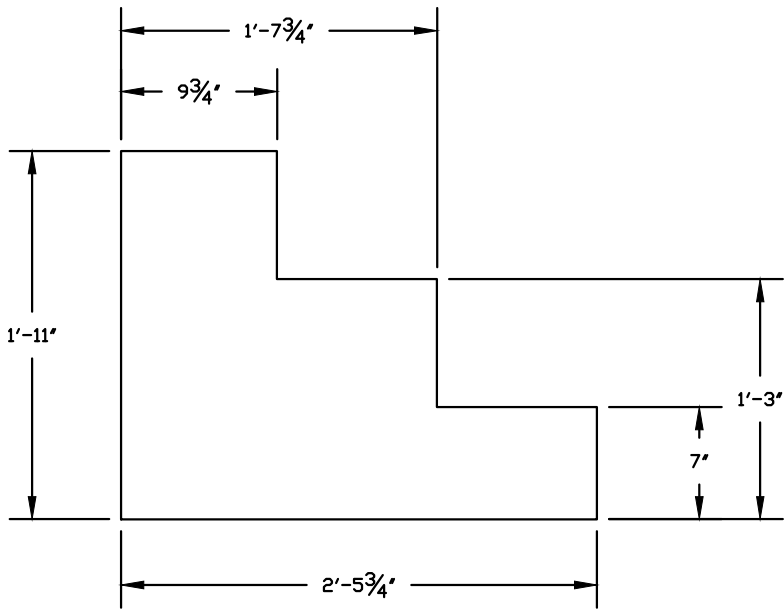
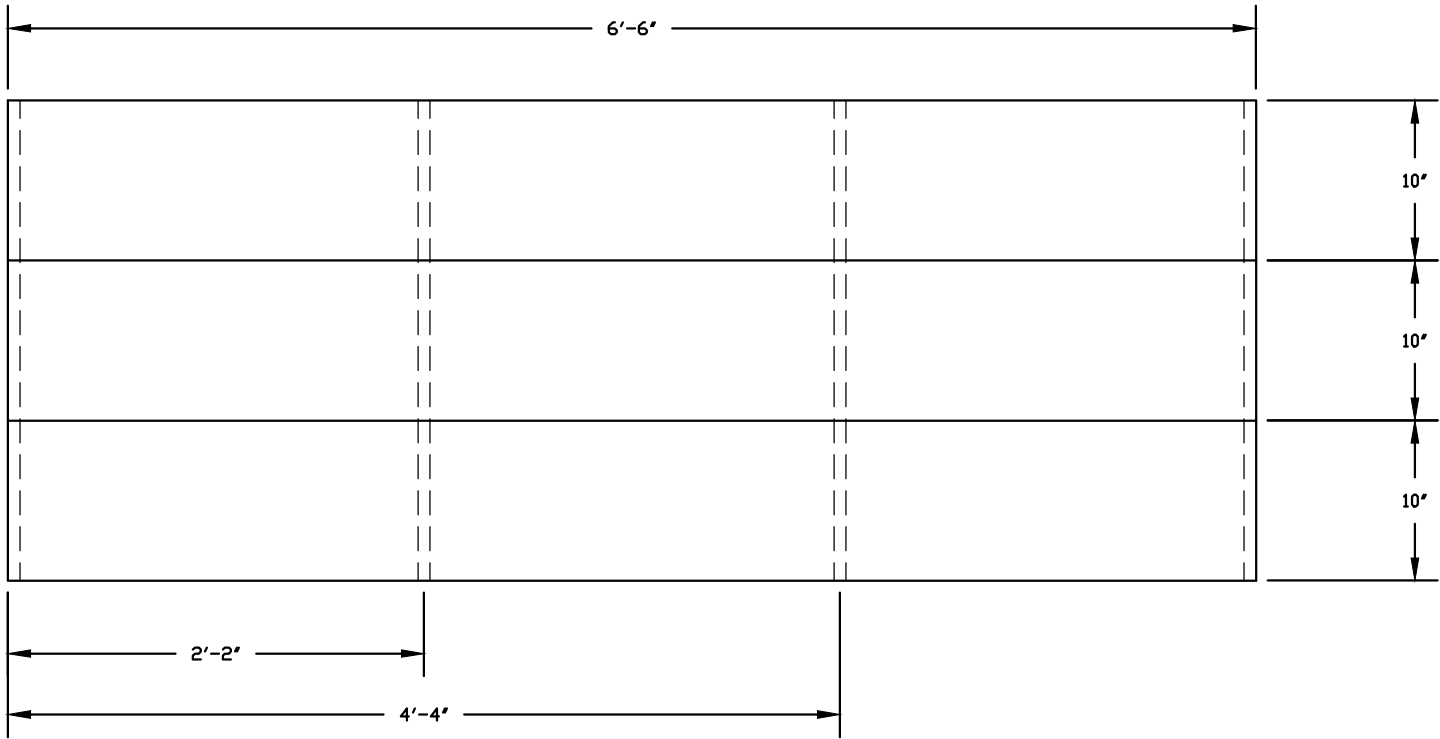
WEBER STATE OPERA		
<i>The Marriage of Figaro</i>		
PATIO PLATFORM		
DIR. KAREN BRUESTLE	DRAWING # D4 PLATFORM DETAIL	DATE 2/16/17
DES. BRYCE DALE ALLEN		
T.D. CHRIS CARIGNAN		
DFT. BRYCE DALE ALLEN		
SCALE: 1/2" = 1'	APPROVED BY:	

NOTES:
- STANDARD 2X4 AND 3/4" PLY CONSTRUCTION.

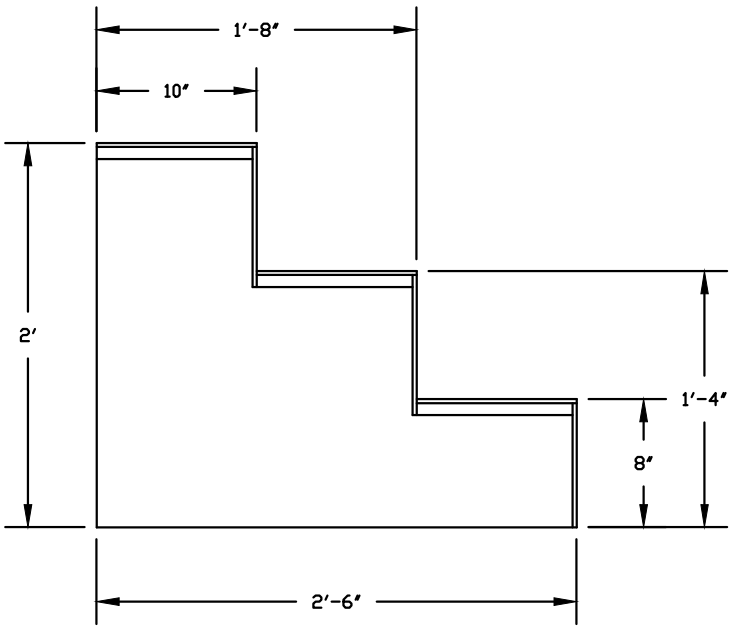


WEBER STATE OPERA		
<i>The Marriage of Figaro</i>		
PATIO PLATFORM A AND B		
DIR. KAREN BRUESTLE	DRAWING # D4A PLATFORM DETAIL	DATE: 2/16/17
DES. BRYCE DALE ALLEN		
T.D. CHRIS CARIGNAN		
DFT. BRYCE DALE ALLEN		
SCALE: 1" = 1'	APPROVED BY:	

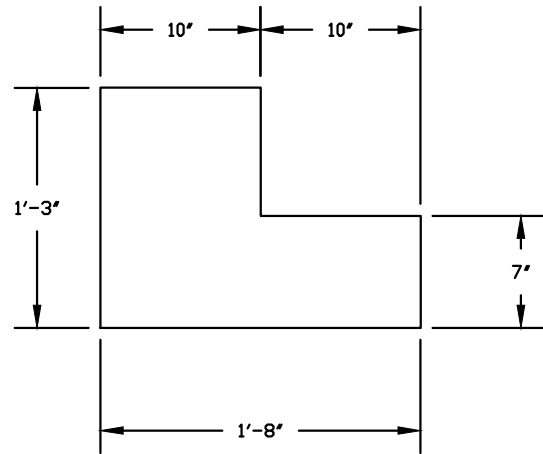
- NOTES:
- CARRIAGE AND TREAD IS $\frac{3}{4}$ " PLY.
 - BUILD 7 CARRIAGES. USE 4 FOR THIS UNIT. THE REST IS FOR STEP UNIT B.
 - FACE WITH LAUAN
 - COVER WITH MASO



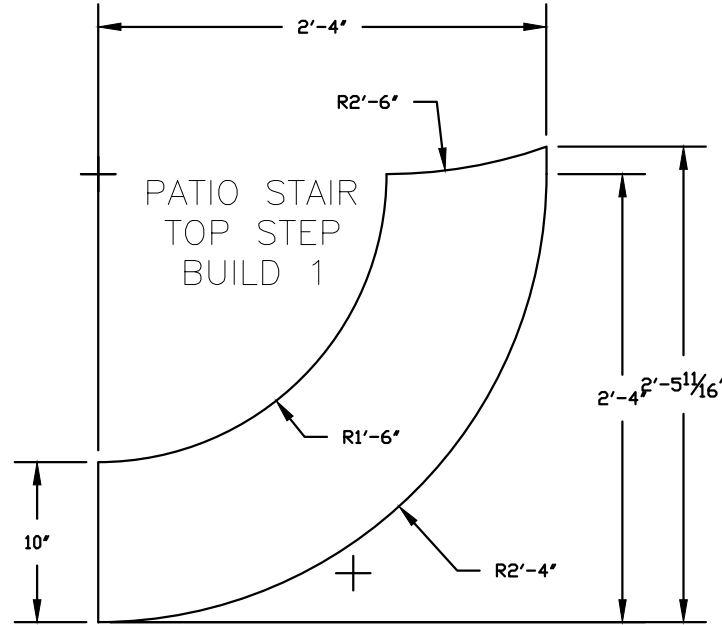
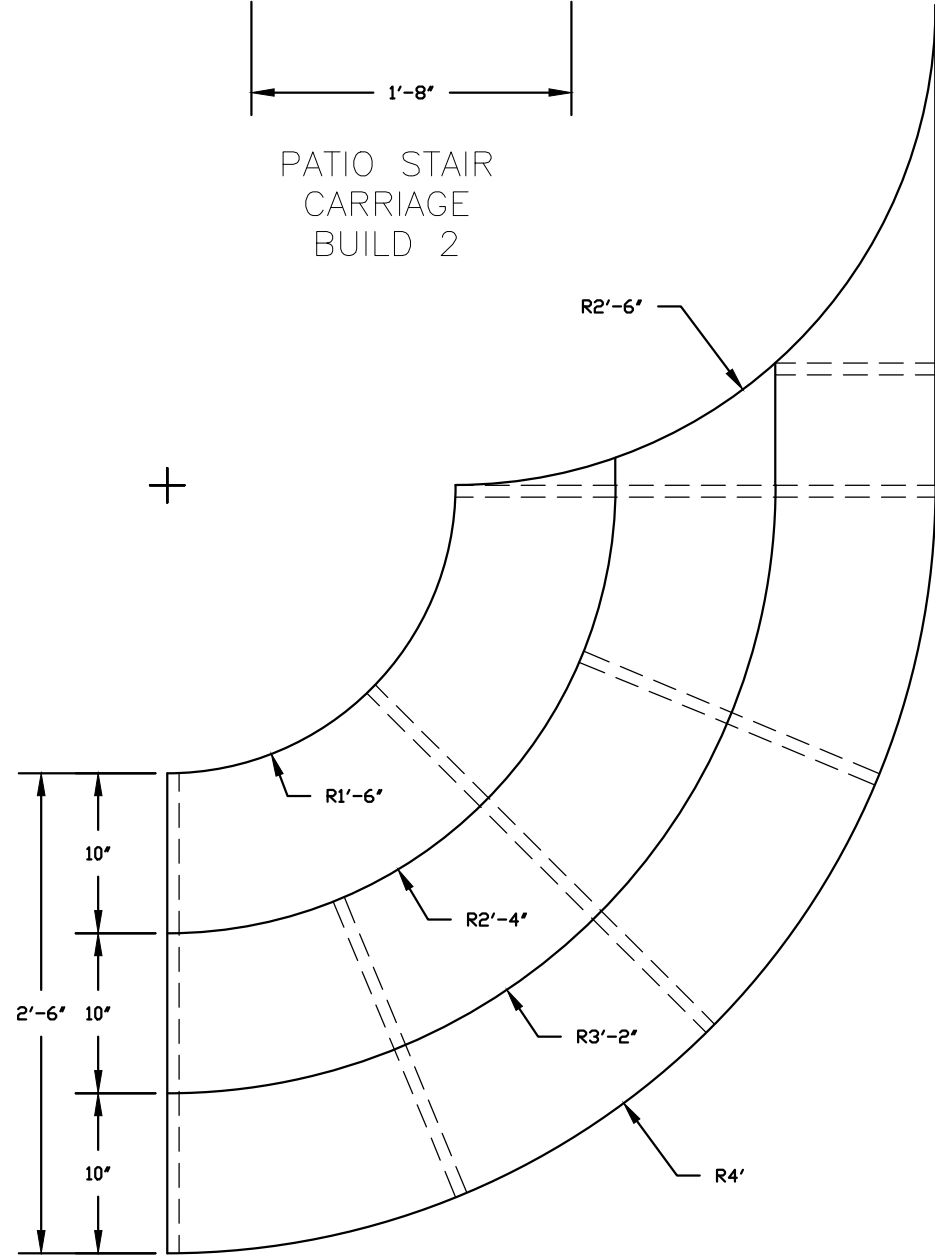
PATIO STAIR
CARRIAGE
BUILD 7



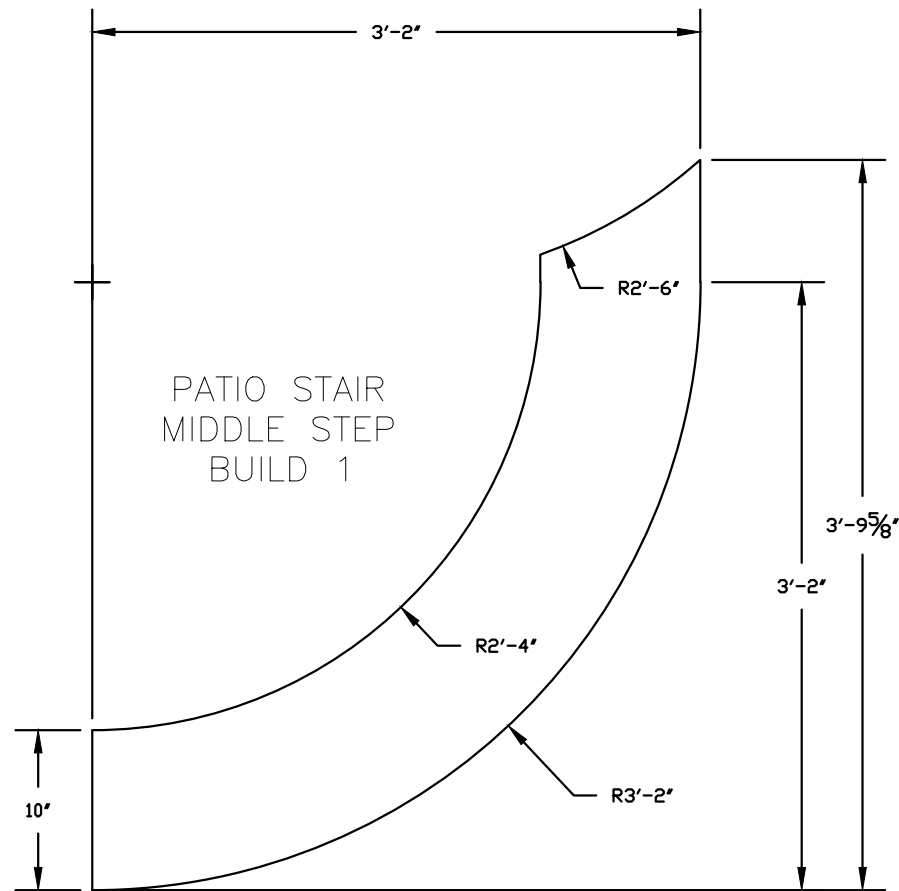
WEBER STATE OPERA		
<i>The Marriage of Figaro</i>		
PATIO STEP UNIT A		
DIR. KAREN BRUESTLE	DRAWING # D4B PLATFORM DETAIL DATE: 2/16/17	
DES. BRYCE DALE ALLEN		
T.D. CHRIS CARIGNAN		
DFT. BRYCE DALE ALLEN		
SCALE: 1" = 1'	APPROVED BY:	



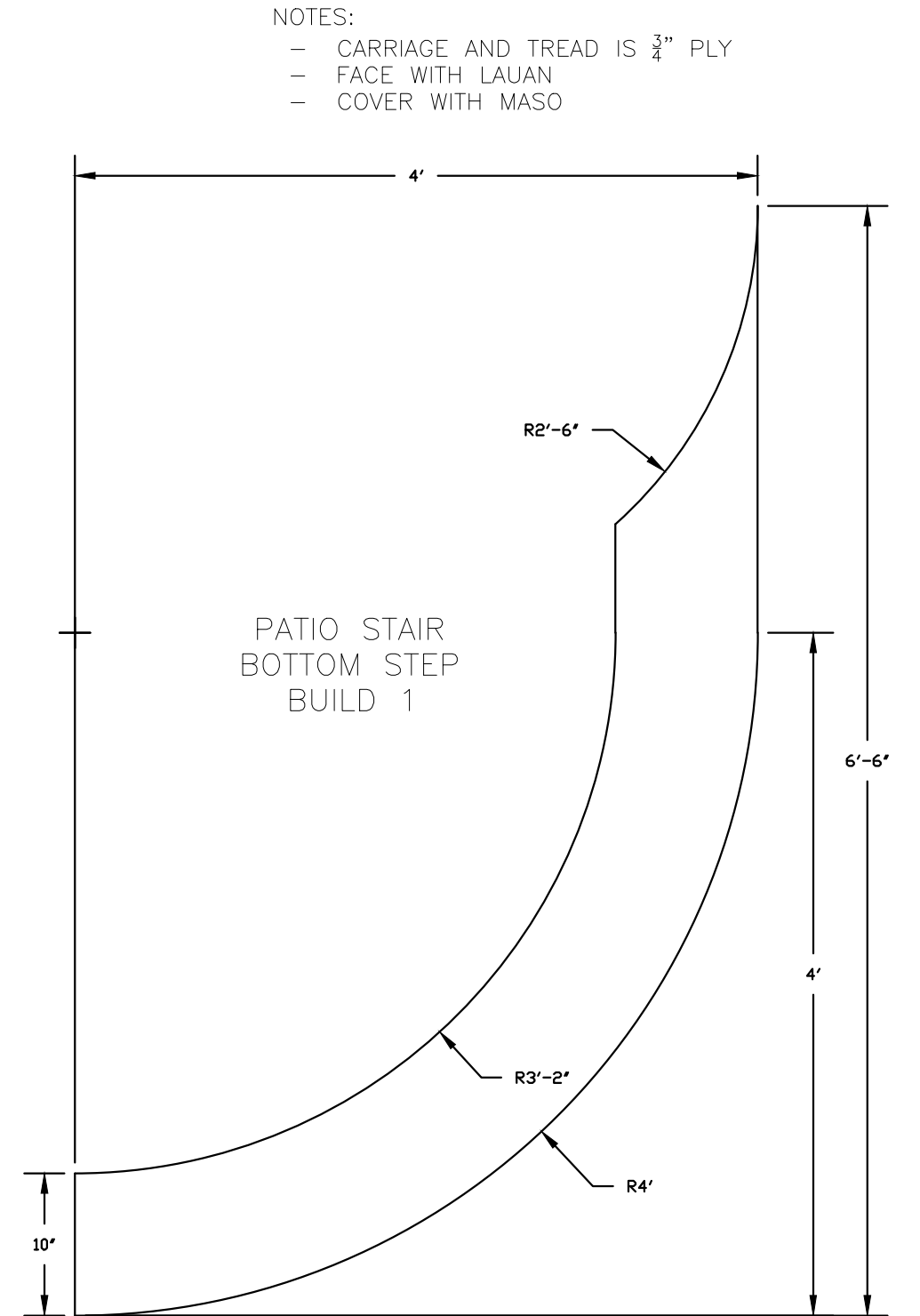
PATIO STAIR
CARRIAGE
BUILD 2



PATIO STAIR
TOP STEP
BUILD 1



PATIO STAIR
MIDDLE STEP
BUILD 1



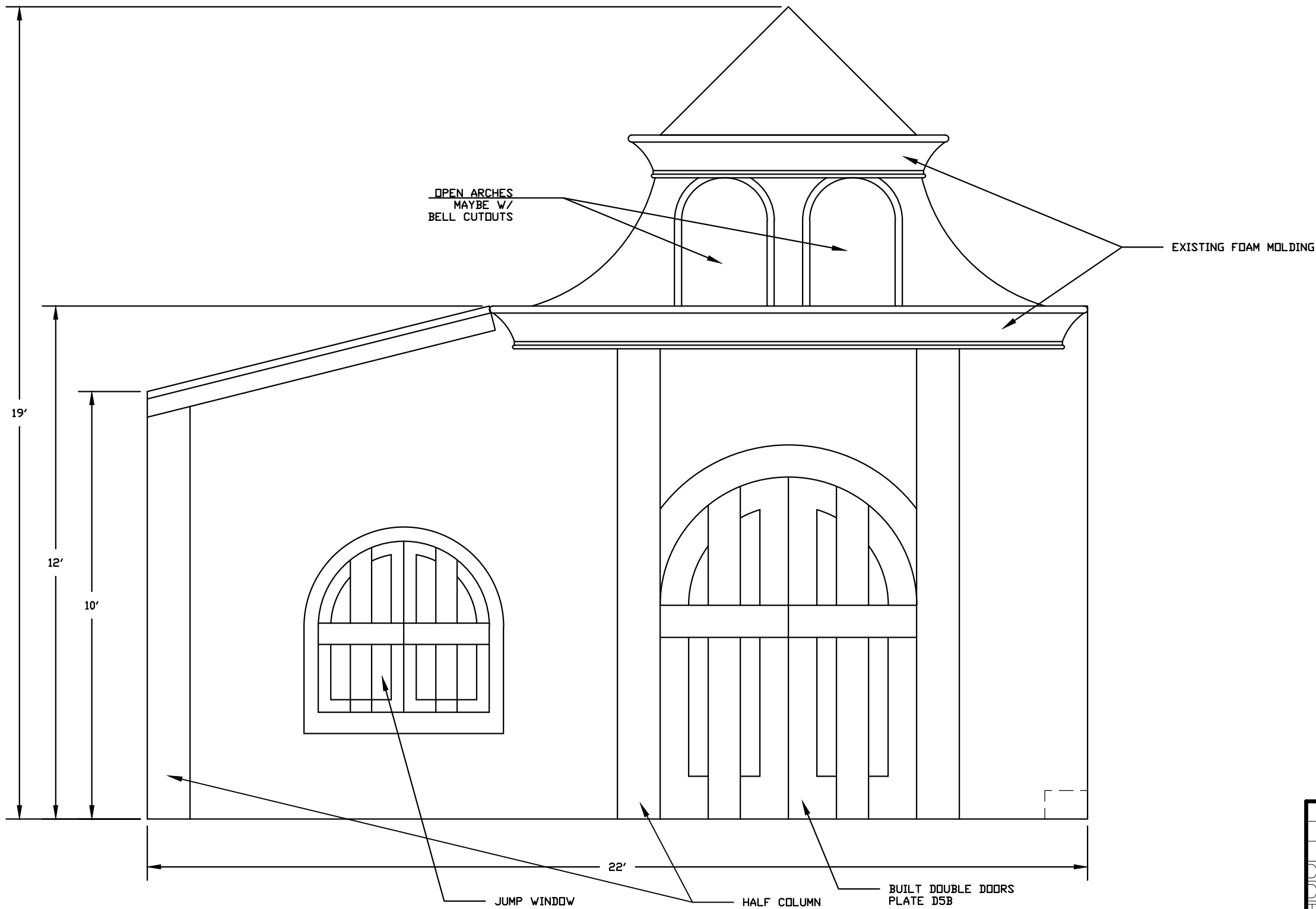
PATIO STAIR
BOTTOM STEP
BUILD 1

NOTES:

- CARRIAGE AND TREAD IS $\frac{3}{4}$ " PLY
- FACE WITH LAUAN
- COVER WITH MASO

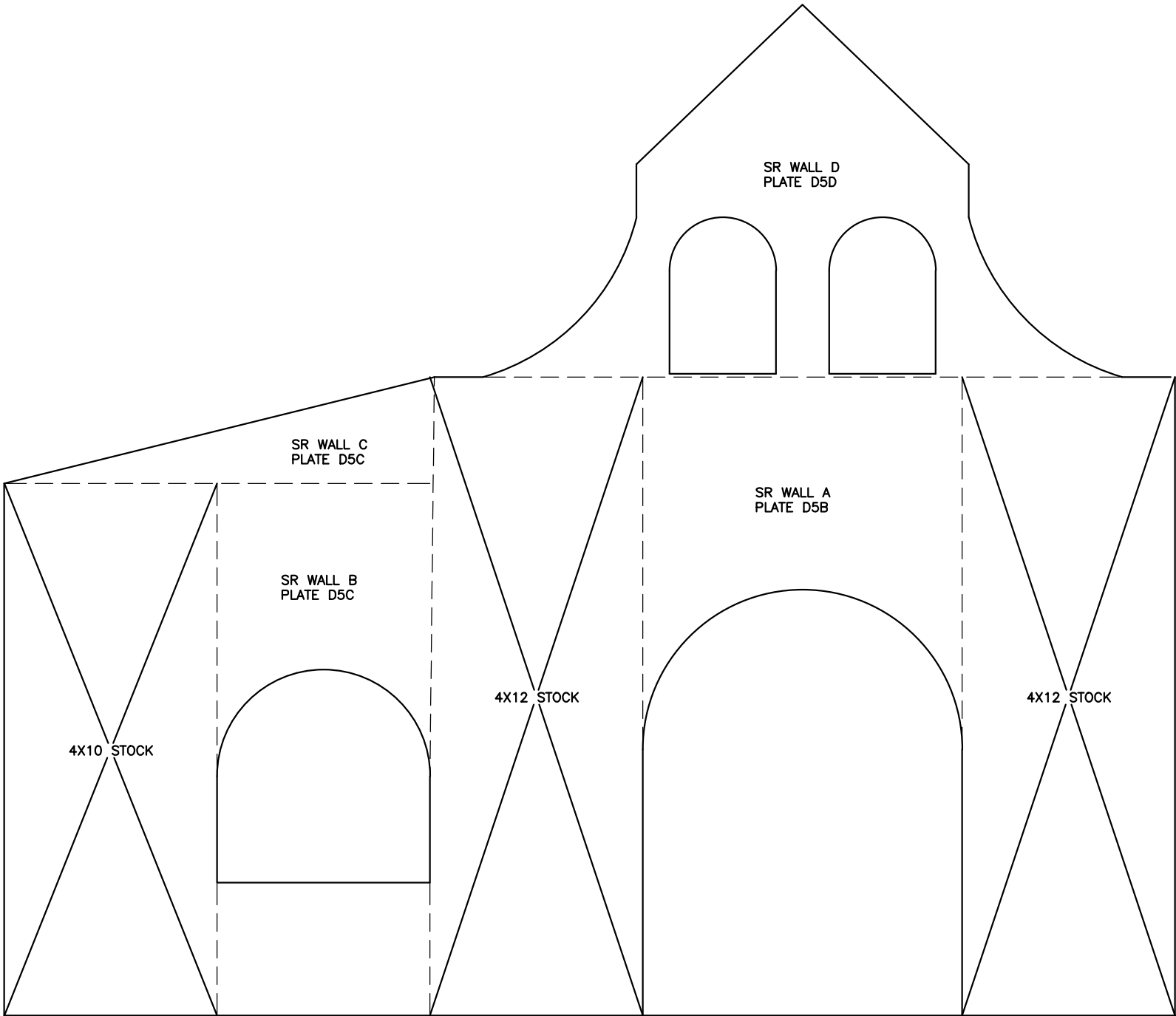
WEBER STATE OPERA		
<i>The Marriage of Figaro</i>		
PATIO STEP UNIT B		
DIR. KAREN BRUESTLE	DRAWING #	D4C
DES. BRYCE DALE ALLEN		
T.D. CHRIS CARIGNAN		
DFT. BRYCE DALE ALLEN		
SCALE: 1" = 1'	APPROVED BY:	DATE: 2/16/17

NOTES:
-SEE NOTES ON DRAWING
-STOCK WALL/BUILT WALL SEE D5A

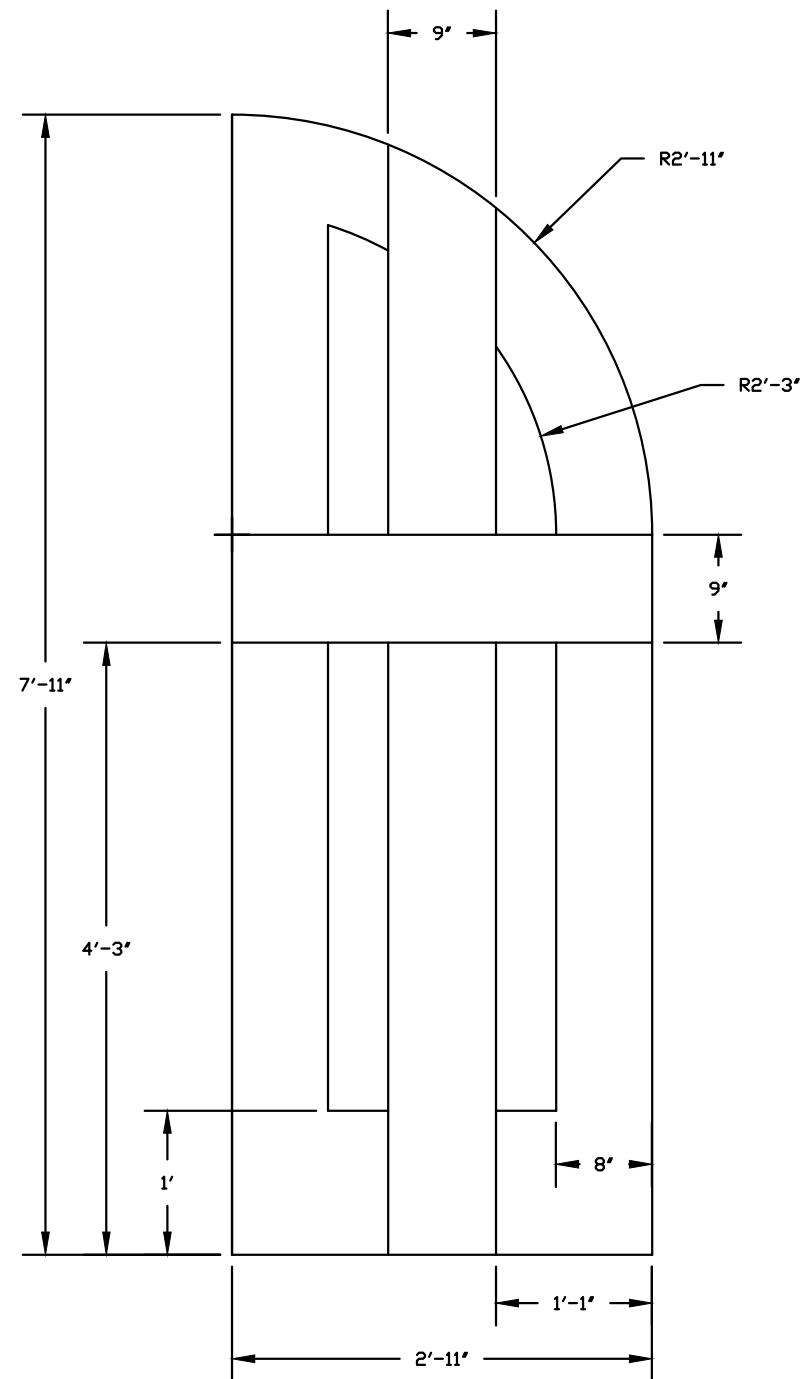


WEBER STATE UNIVERSITY		
<i>The Marriage of Figaro</i>		
STAGE RIGHT WALL ELEVATION		
DIR. KAREN BRUESTLE	DRAWING #	D5
DES. BRYCE DALE ALLEN		
T.D. CHRIS CARIGNAN		
DFT. BRYCE DALE ALLEN		
SCALE: 3/8" = 1'	APPROVED BY:	ELEVATION
		DATE: 2/16/17

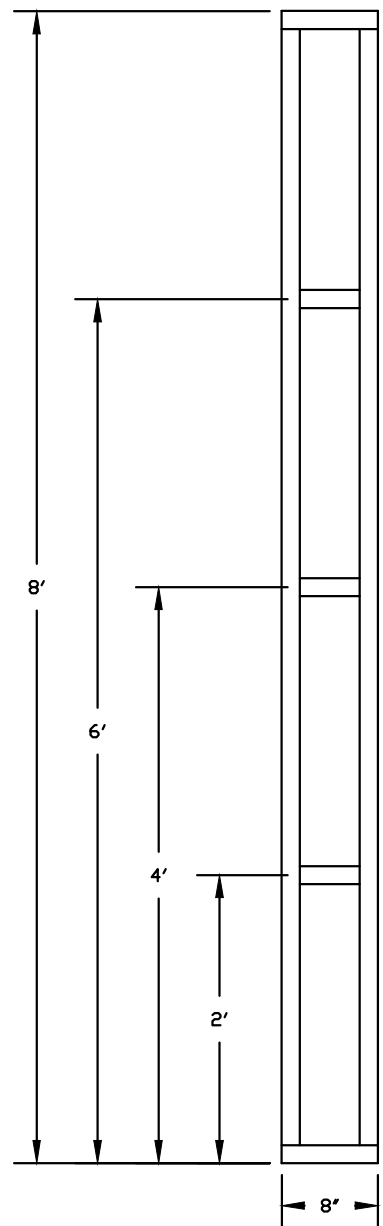
- NOTES:
- SEE NOTES ON DRAWING
 - PULL 2 - 4'X12' STOCK FLATS
 - PULL 1 - 4'X10' STOCK FLAT
 - BUILD THE REST USING 1X4 AND LAUAN
 - HOLLYWOOD STYLE CONSTRUCTION.



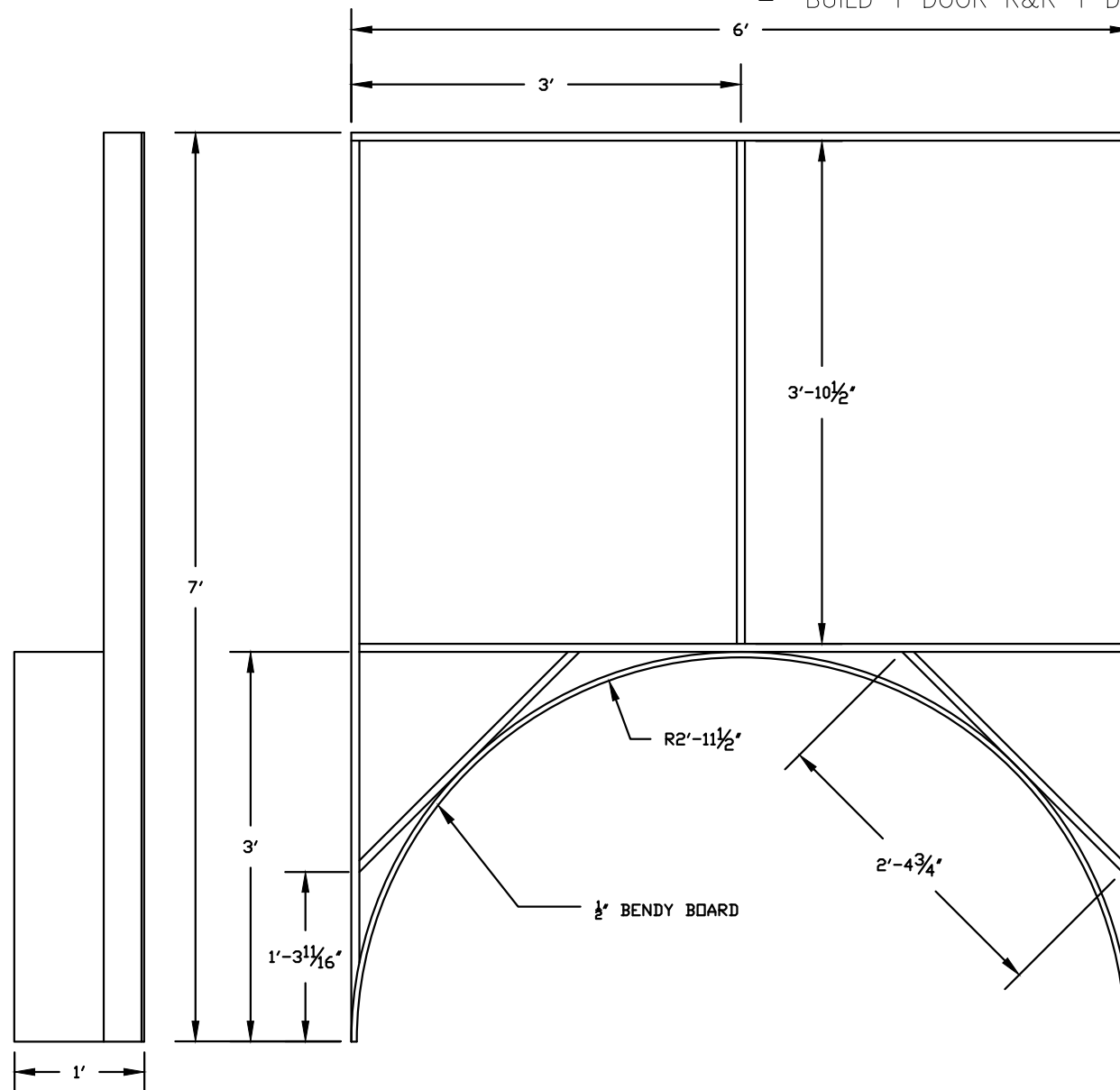
WEBER STATE UNIVERSITY			
<i>The Marriage of Figaro</i>			
STAGE RIGHT WALL ELEVATION			
DIR. KAREN BRUESTLE	DRAWING # D5		
DES. BRYCE DALE ALLEN			
T.D. CHRIS CARIGNAN			
DFT. BRYCE DALE ALLEN			
SCALE: 3/8" = 1'	APPROVED BY:	ELEVATION	DATE: 2/16/17



GRAND HALL DOOR
BUILD 2 R&R



DOOR BUTTRESS
FRAME BUILD 2

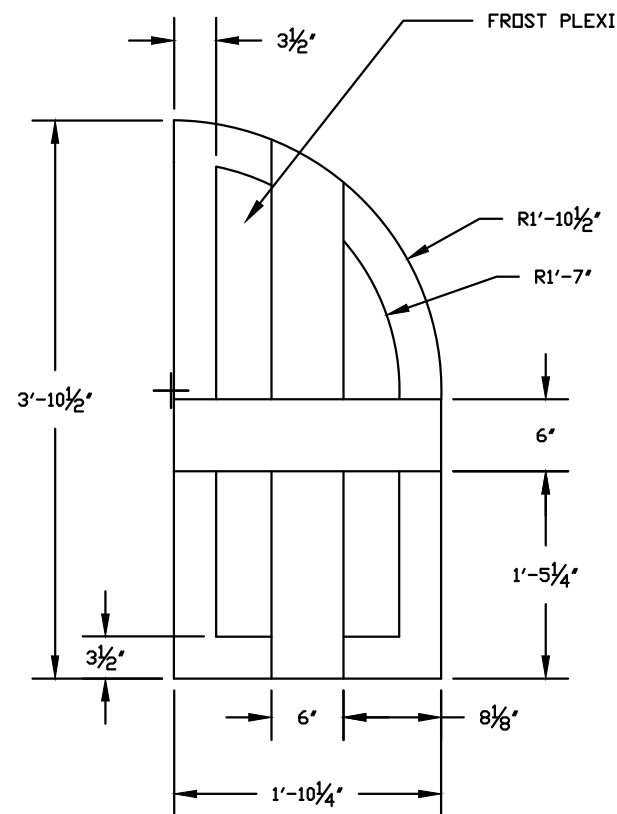


SR WALL A
DOOR WALL
SIDE VIEW

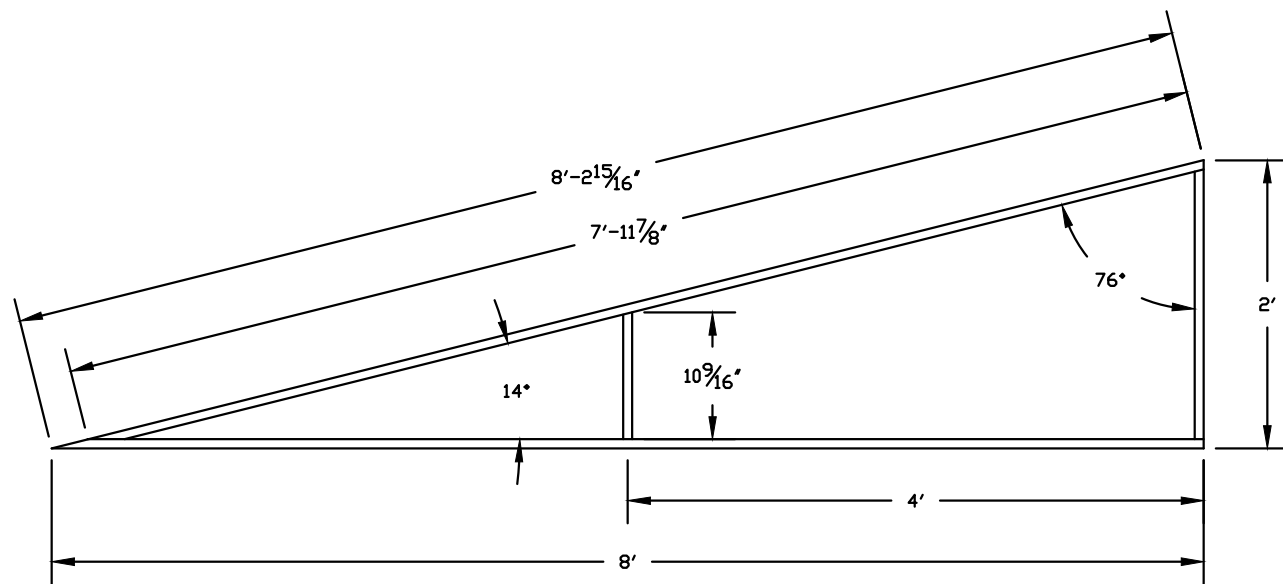
SR WALL A
DOOR WALL
BACK VIEW
BUILD 1

- NOTES:
- FRAME IS 1X4 HOLLYWOOD STYLE FLATS
 - COVER WITH LAUAN.
 - USE $\frac{1}{2}$ " BENDY BOARD FOR ARCH REVEAL
 - DOOR BUTTRESS IS FRAMED WITH 2X4 AND COVERED WITH $\frac{3}{4}$ " PLY.
 - BUILD 2 DOOR BUTTRESSES.
 - BUILD DOOR W/ $\frac{1}{2}$ " PLY DETAIL IS $\frac{3}{4}$ " PLY. BRACE ON BACK AS NEEDED
 - BUILD 1 DOOR R&R 1 DOOR.

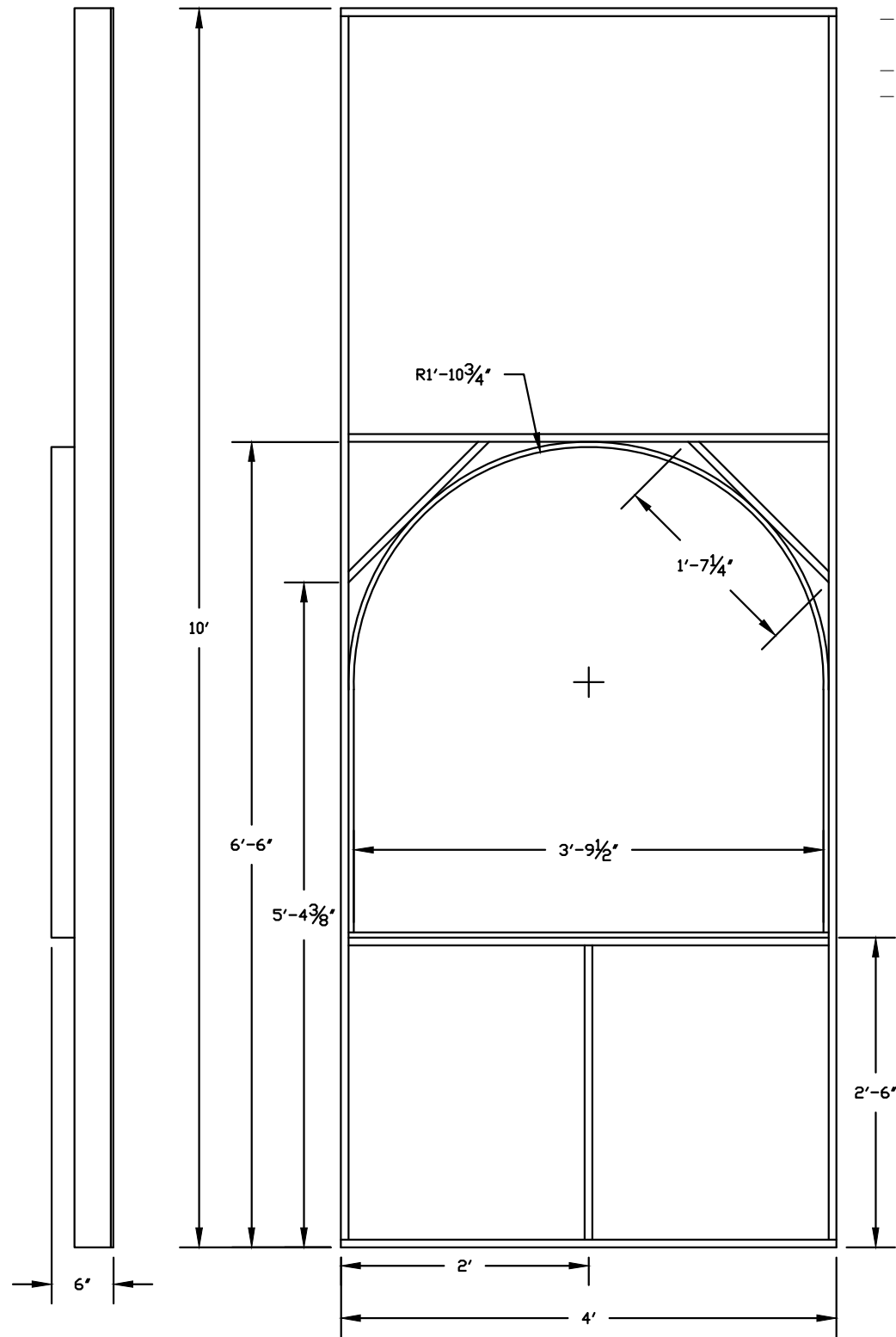
WEBER STATE UNIVERSITY	
<i>The Marriage of Figaro</i>	
SR WALL DOOR FLAT & DOOR	
DIR. KAREN BRUESTLE	DRAWING #
DES. BRYCE DALE ALLEN	D5B
T.D. CHRIS CARIGNAN	ELEVATION
DFT. BRYCE DALE ALLEN	DATE: 2/16/17
SCALE: $\frac{3}{4}$ " = 1'	APPROVED BY:



SR WALL B JUMP
WINDOW SHUTTER
BUILD 1 R&R 1



SR WALL C
BACK VIEW
BUILD 1



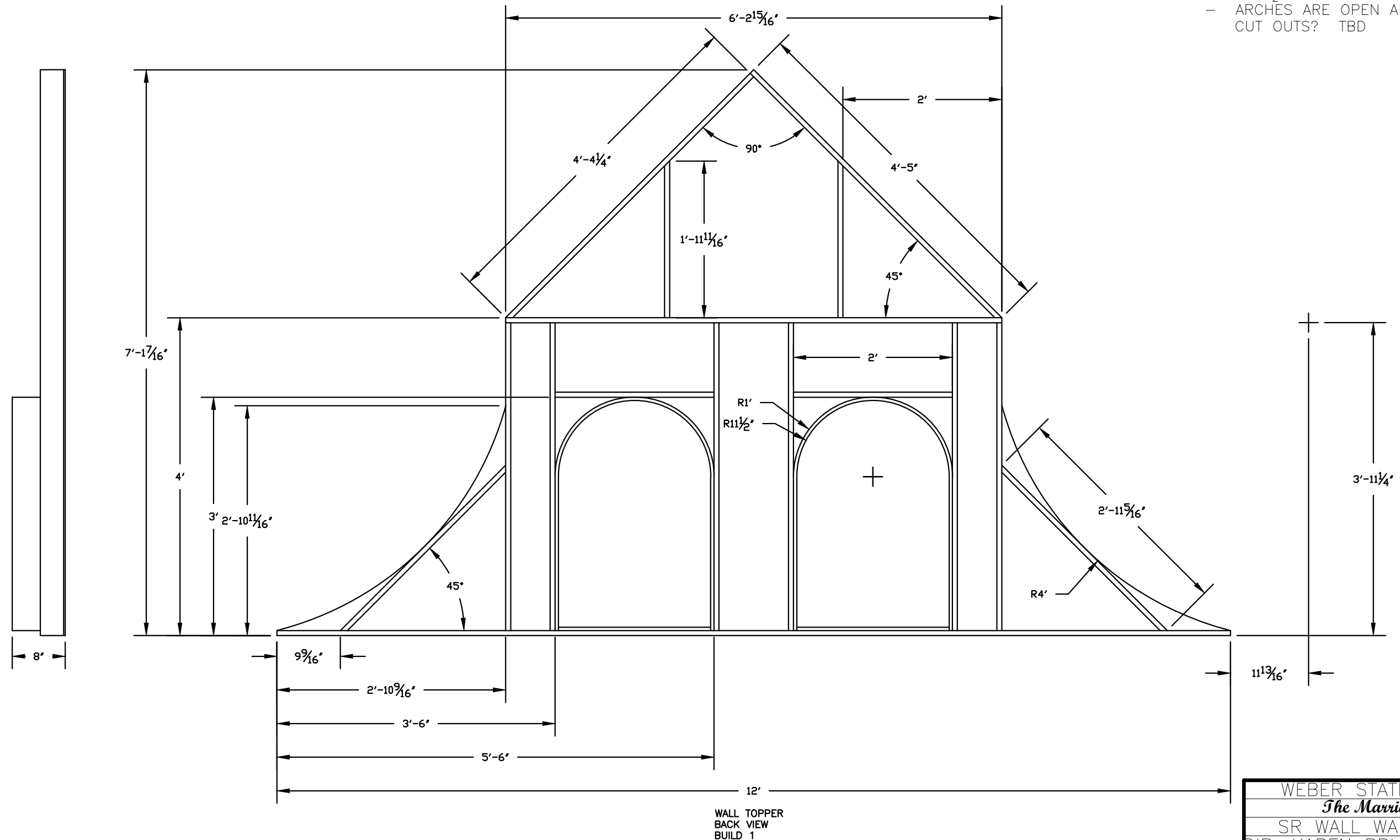
SR WALL B JUMP
WINDOW WALL
BACK VIEW
BUILD 1

NOTES:

- FRAME IS 1X4 HOLLYWOOD STYLE FLATS
- COVER WITH LAUAN.
- USE 1/2" BENDY BOARD FOR ARCH REVEAL
- CUT WINDOW OF 3/4" PLY BACK WITH 1/8" FROSTED PLEXIGLASS
- BUILD 1 WINDOW R&R 1 WINDOW.
- SOMEONE JUMPS THROUGH THIS WINDOW REINFORCE AS NEEDED.

WEBER STATE UNIVERSITY	
<i>The Marriage of Figaro</i>	
SR WALL FLATS B WINDOW & C	DRAWING #
DIR. KAREN BRUESTLE	
DES. BRYCE DALE ALLEN	D5C
T.D. CHRIS CARIGNAN	
DFT. BRYCE DALE ALLEN	ELEVATION
SCALE: 3/4" = 1'	
APPROVED BY:	DATE: 2/16/17

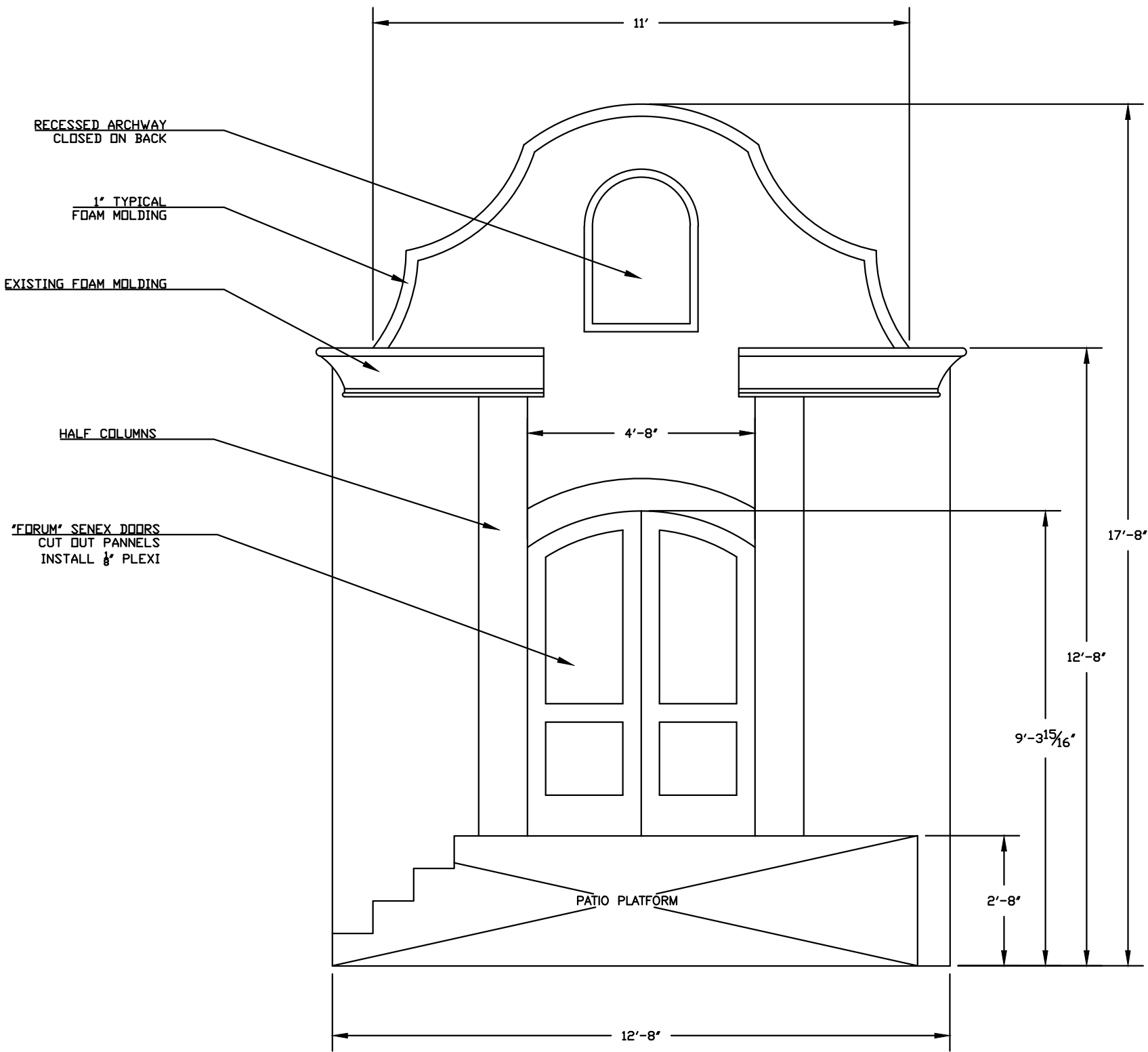
- NOTES:
- FRAME IS 1X4 HOLLYWOOD STYLE FLATS
 - COVER WITH LAUAN.
 - USE $\frac{1}{2}$ " BENDY BOARD FOR ARCHES REVEAL
 - ARCHES ARE OPEN AIR POSSIBLY ADD BELL CUT OUTS? TBD



WALL TOPPER
BACK VIEW
BUILD 1

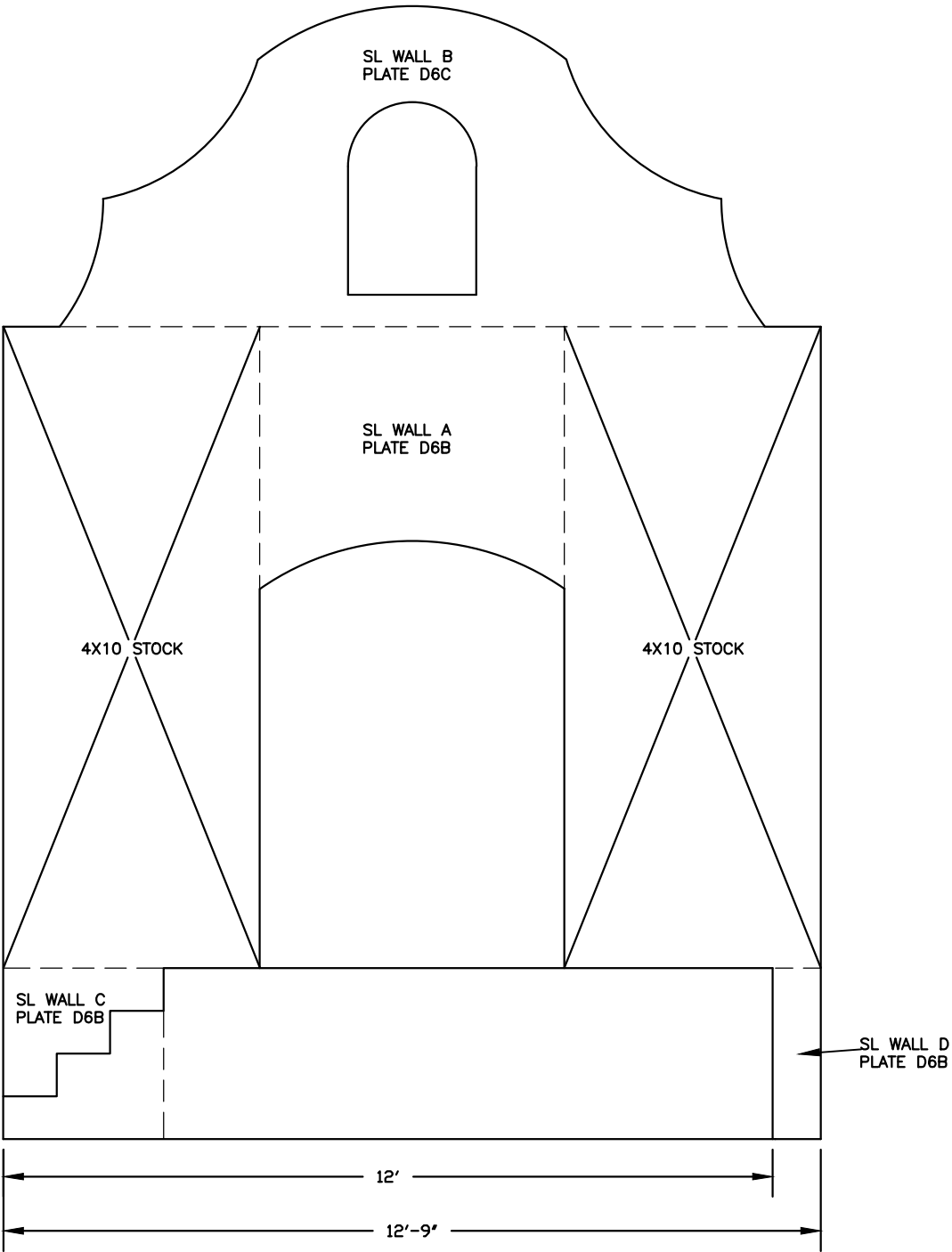
WEBER STATE UNIVERSITY	
<i>The Marriage of Figaro</i>	
SR WALL WALL D TOPPER	
DIR. KAREN BRUESTLE	DRAWING # D5D
DES. BRYCE DALE ALLEN	
T.D. CHRIS CARIGNAN	
DFT. BRYCE DALE ALLEN	
SCALE: 3/4" = 1'	ELEVATION
APPROVED BY:	DATE: 2/16/17

NOTES:
-SEE NOTES ON DRAWING
-STOCK WALL/BUILT WALL SEE D6A

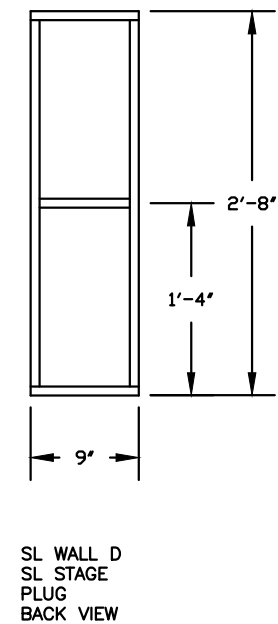
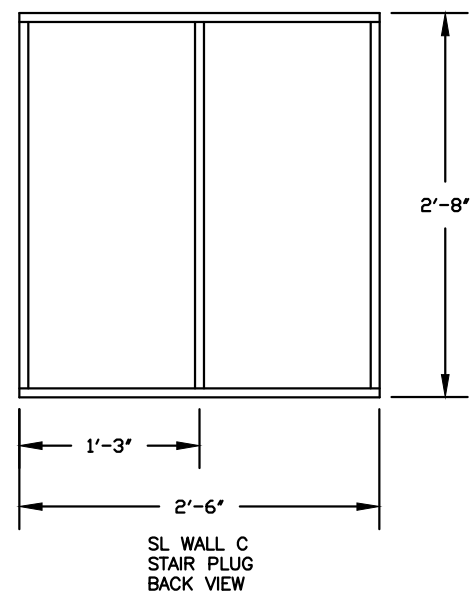
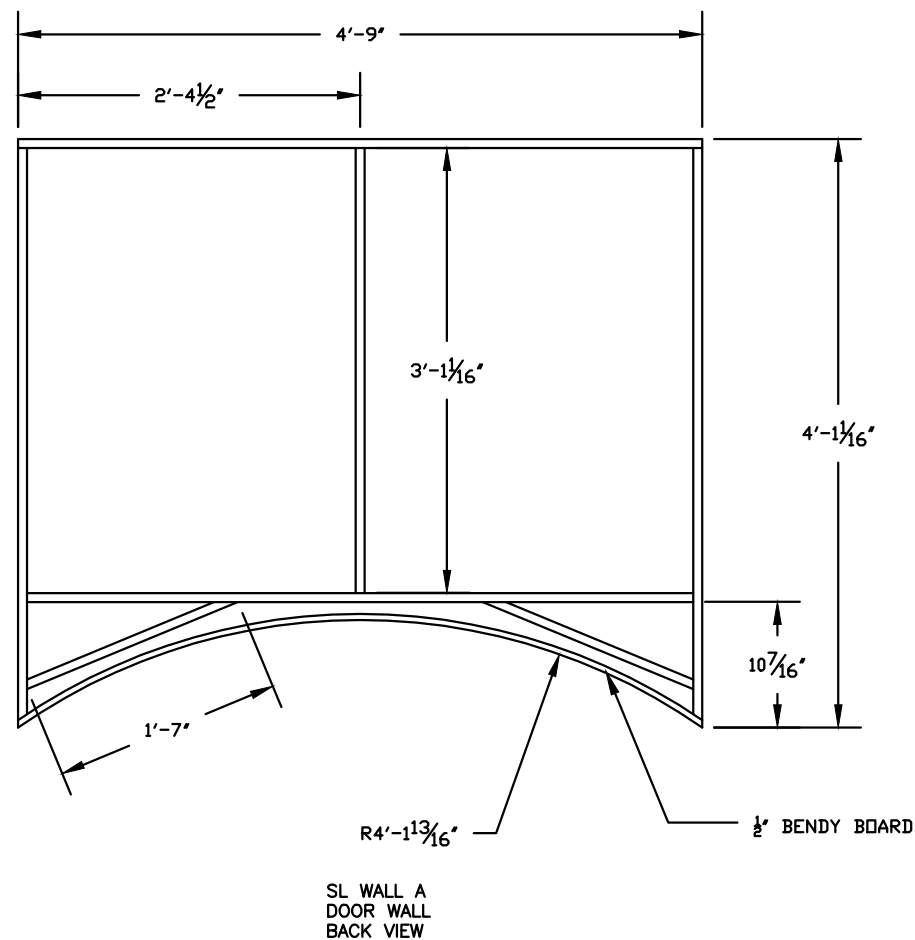


WEBER STATE UNIVERSITY	
<i>The Marriage of Figaro</i>	
STAGE LEFT WALL ELEVATION	
DIR. KAREN BRUESTLE	DRAWING #
DES. BRYCE DALE ALLEN	D6
T.D. CHRIS CARIGNAN	ELEVATION
DFT. BRYCE DALE ALLEN	DATE: 2/16/17
SCALE: 3/8" = 1'	APPROVED BY:

- NOTES:
- SEE NOTES ON DRAWING
 - PULL 2 — 4'X10' STOCK FLATS
 - BUILD THE REST USING 1X4 AND LAUAN
 - HOLLYWOOD STYLE CONSTRUCTION.



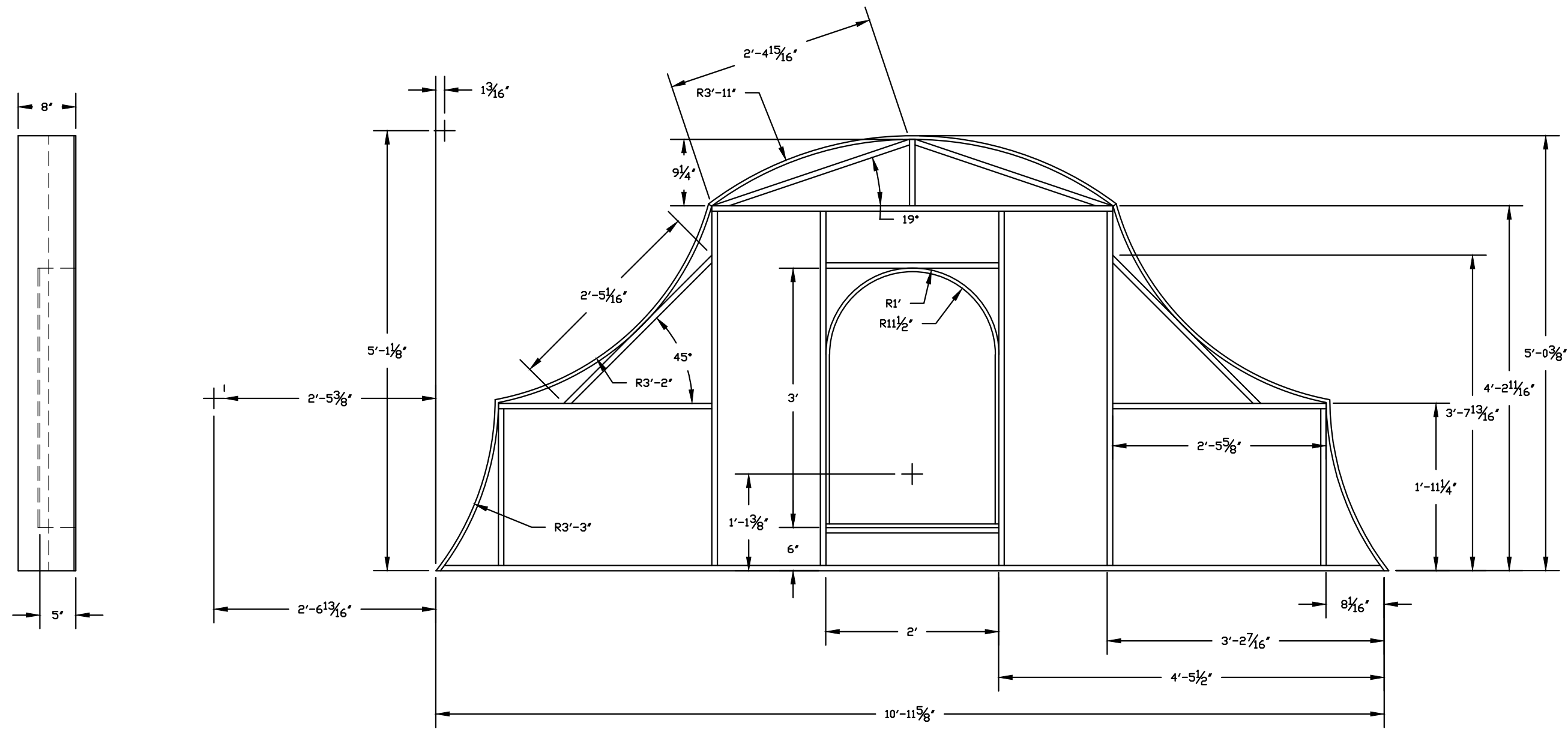
WEBER STATE UNIVERSITY		
<i>The Marriage of Figaro</i>		
STAGE LEFT WALL ELEVATION		
DIR. KAREN BRUESTLE		DRAWING # D6A
DES. BRYCE DALE ALLEN		
T.D. CHRIS CARIGNAN		
DFT. BRYCE DALE ALLEN		
SCALE: 3/8" = 1'	APPROVED BY:	DATE: 2/16/17



- NOTES:
- FRAME IS 1X4 HOLLYWOOD STYLE FLATS
 - COVER WITH LAUAN.
 - USE 1/2" BENDY BOARD FOR DOORWAY ARCH REVEAL
 - USE DOORS FROM "FORUM" SENEX HOUSE CUT ARCH TO MATCH DOORS.
 - CUT OUT DOOR PANELS AND REPLACE WITH 1/8" PLEXIGLASS

WEBER STATE UNIVERSITY	
<i>The Marriage of Figaro</i>	
SL WALL A ,C AND D	
DIR. KAREN BRUESTLE	DRAWING #
DES. BRYCE DALE ALLEN	D6B
T.D. CHRIS CARIGNAN	
DFT. BRYCE DALE ALLEN	ELEVATION
SCALE: 3/4" = 1'	APPROVED BY: DATE: 2/16/17

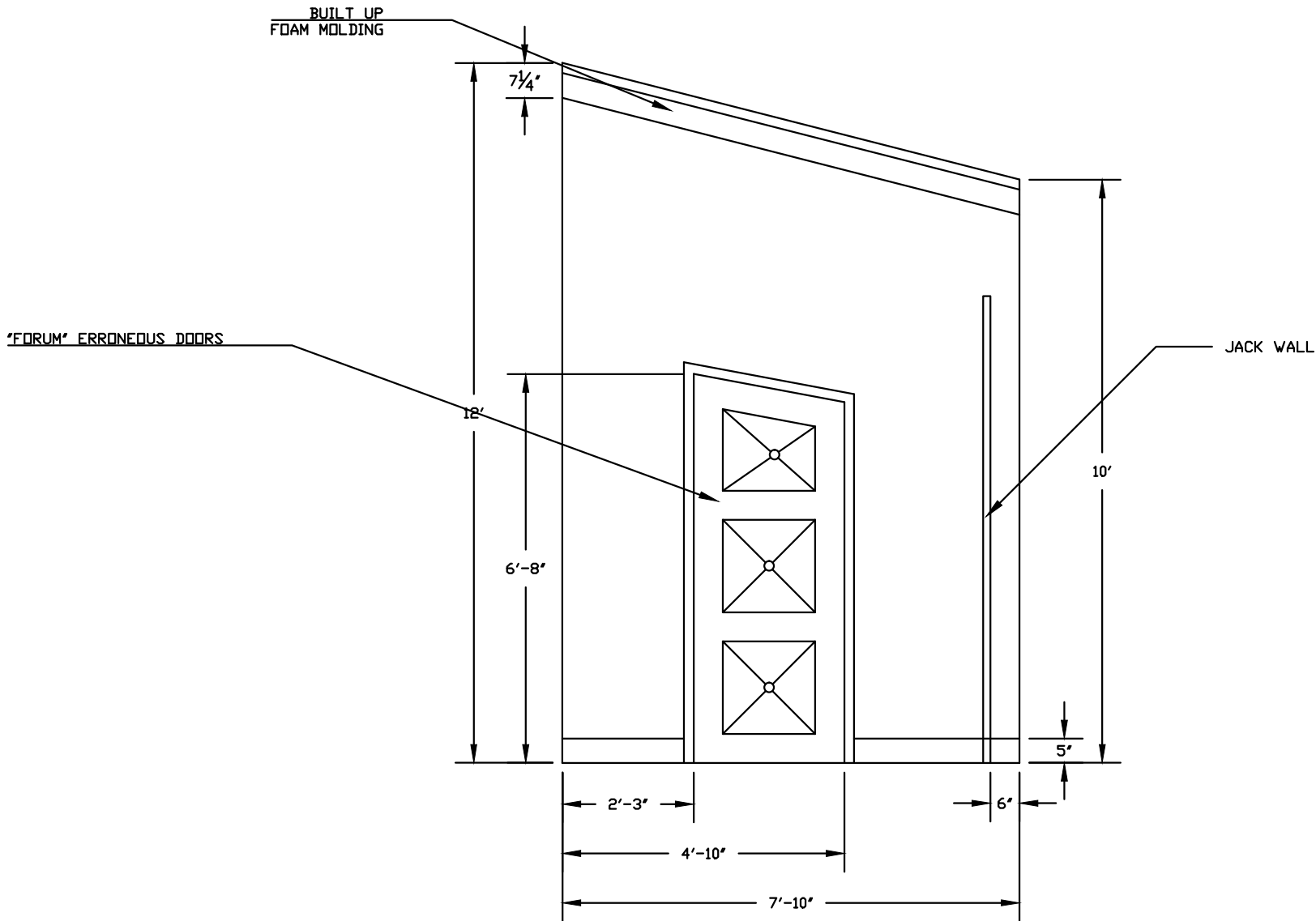
- NOTES:
- FRAME IS 1X4 HOLLYWOOD STYLE FLATS
 - COVER WITH LAUAN.
 - USE 1/2" BENDY BOARD FOR ARCH REVEAL AND SIDE REVEAL
 - CENTER ARCH IS CLOSED ON BACK WITH LAUAN



SL WALL B
DOOR WALL
BACK VIEW

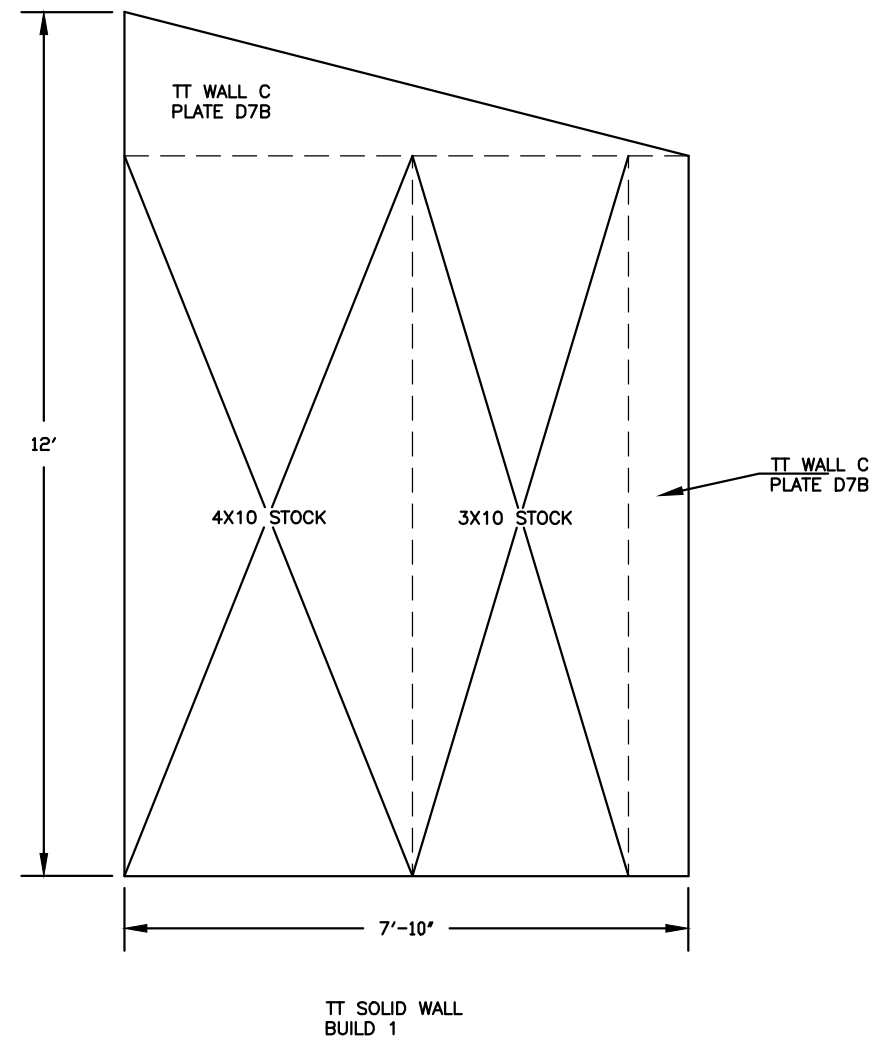
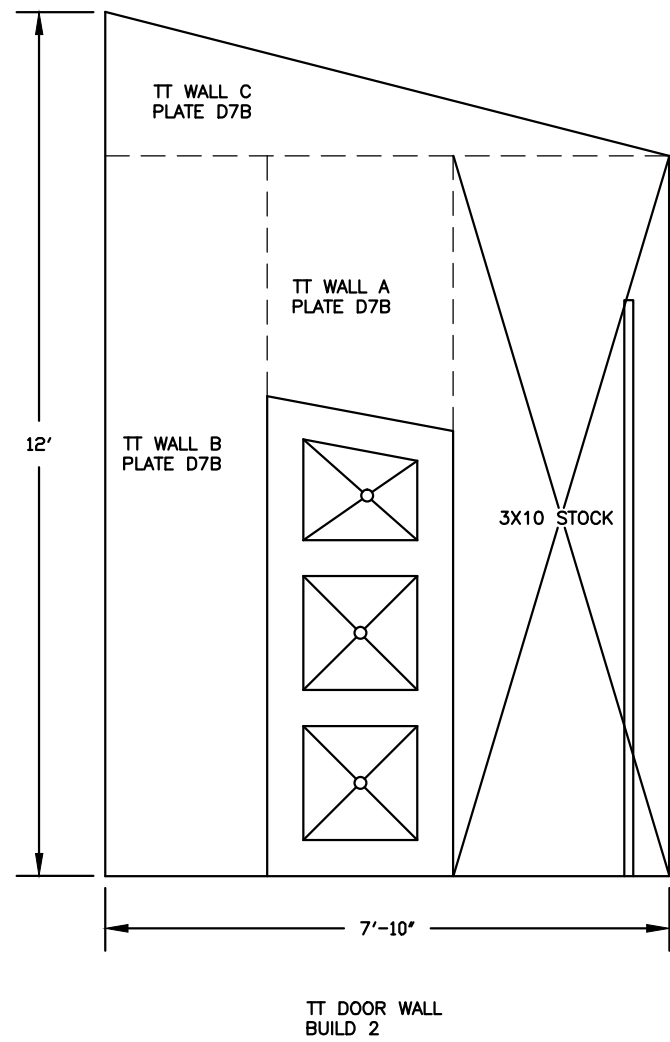
WEBER STATE UNIVERSITY	
<i>The Marriage of Figaro</i>	
SL WALL B	
DIR. KAREN BRUESTLE	DRAWING # D6C
DES. BRYCE DALE ALLEN	
T.D. CHRIS CARIGNAN	
DFT. BRYCE DALE ALLEN	ELEVATION DATE: 2/16/17
SCALE: 3/4" = 1'	
APPROVED BY:	

- NOTES:
- SEE NOTES ON DRAWING
 - STOCK WALL/BUILT WALL SEE D7A
 - BUILD 2 DOOR WALLS AND ONE WITHOUT A DOOR.
 - FACE BOTH SIDES OF WALL
 - DOORS ARE "FORUM" ERRONEOUS DOORS.

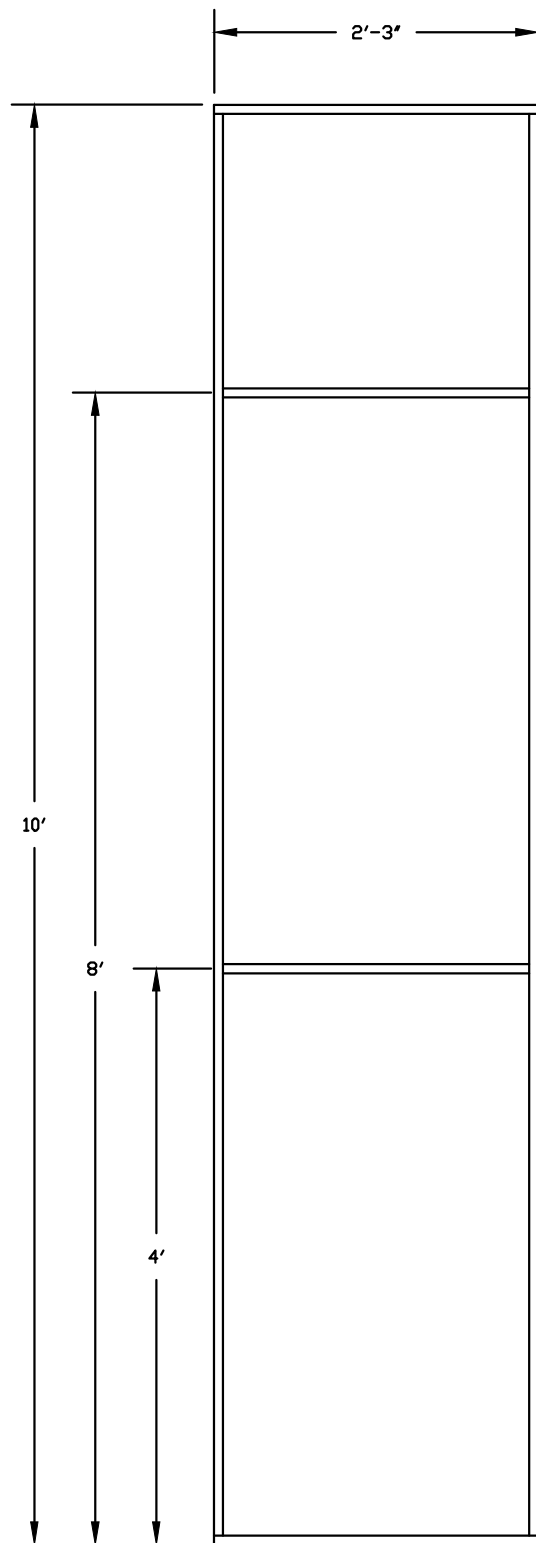


WEBER STATE UNIVERSITY	
<i>The Marriage of Figaro</i>	
TURNTABLE WALLS	
DIR. KAREN BRUESTLE	DRAWING # D7 ELEVATION DATE: 2/16/17
DES. BRYCE DALE ALLEN	
T.D. CHRIS CARIGNAN	
DFT. BRYCE DALE ALLEN	
SCALE: 3/8" = 1'	APPROVED BY:

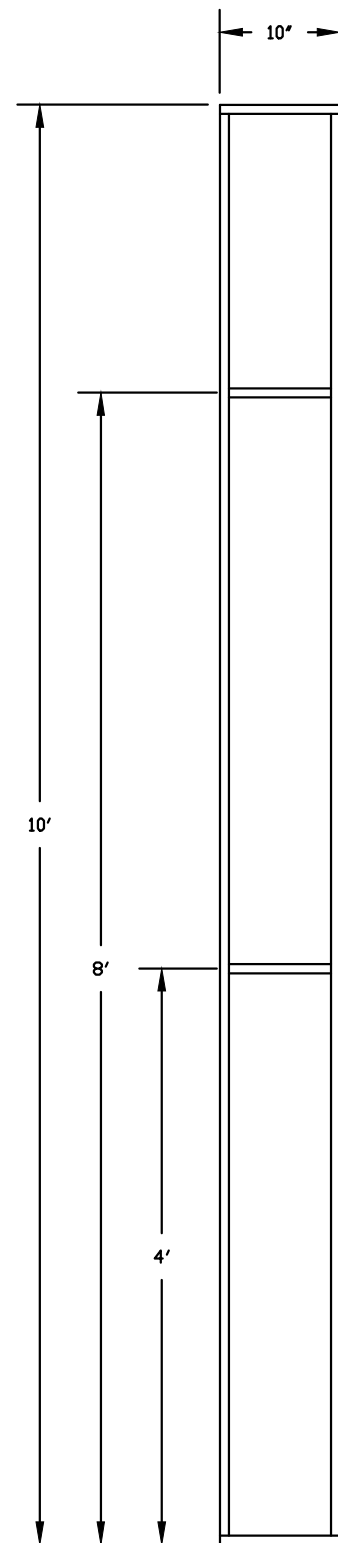
- NOTES:
- SEE NOTES ON DRAWING
 - PULL 3 - 3'X10' STOCK FLATS
 - PULL 1 - 4'X10' STOCK FLAT
 - BUILD THE REST USING 1X4 AND LAUAN
 - DOUBLE SIDED FLATS
 - HOLLYWOOD STYLE CONSTRUCTION.



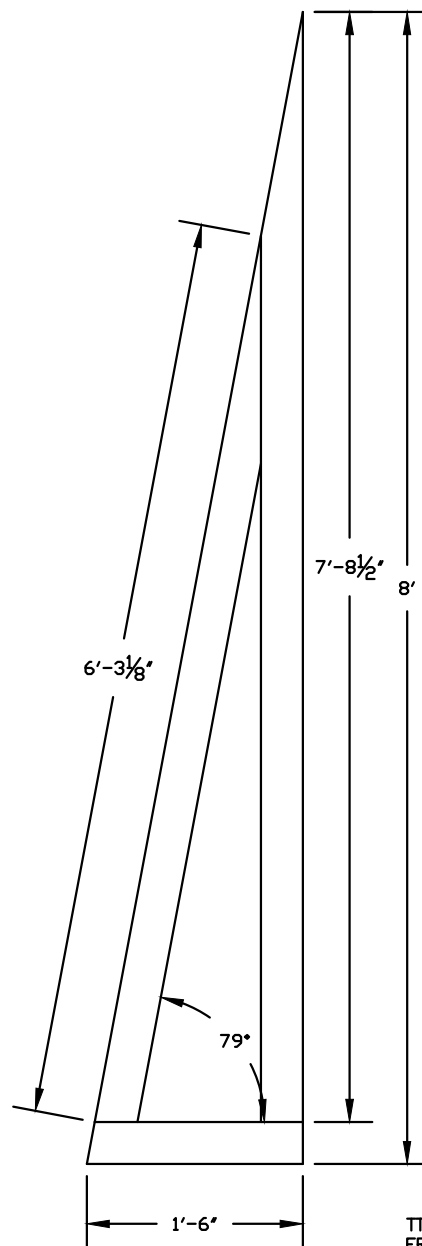
WEBER STATE UNIVERSITY			
<i>The Marriage of Figaro</i>			
STAGE LEFT WALL ELEVATION			
DIR. KAREN BRUESTLE			DRAWING # D7A
DES. BRYCE DALE ALLEN			
T.D. CHRIS CARIGNAN			
DFT. BRYCE DALE ALLEN			
SCALE: 3/8" = 1'		APPROVED BY:	DATE: 2/16/17



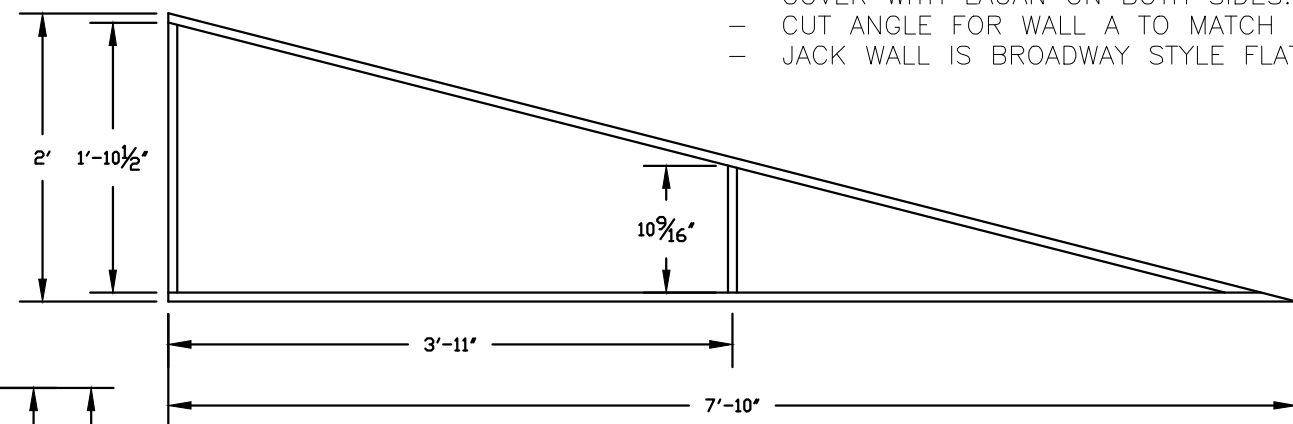
TT WALL B
BACK VIEW
BUILD 2



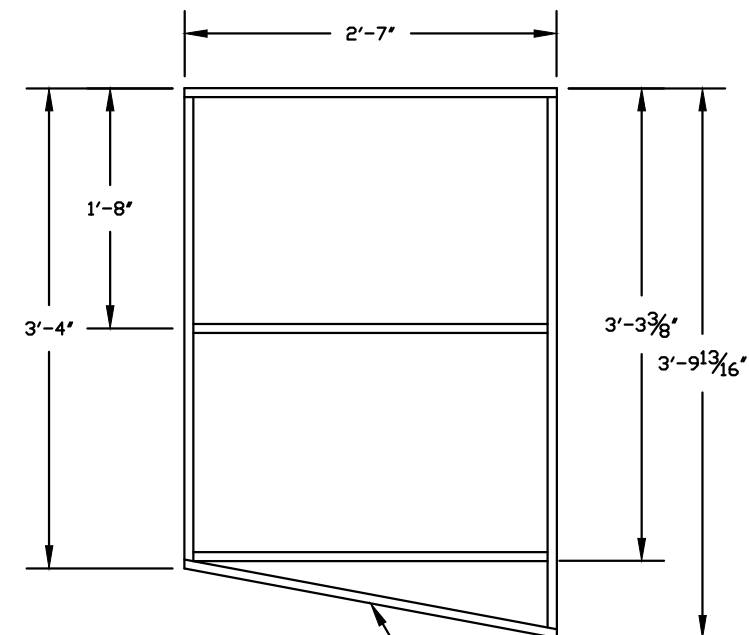
TT WALL D
BACK VIEW
BUILD 1



TT JACK WALL
FRAME VIEW
BUILD 6



TT WALL C
WALL TOPPER
BACK VIEW
BUILD 3

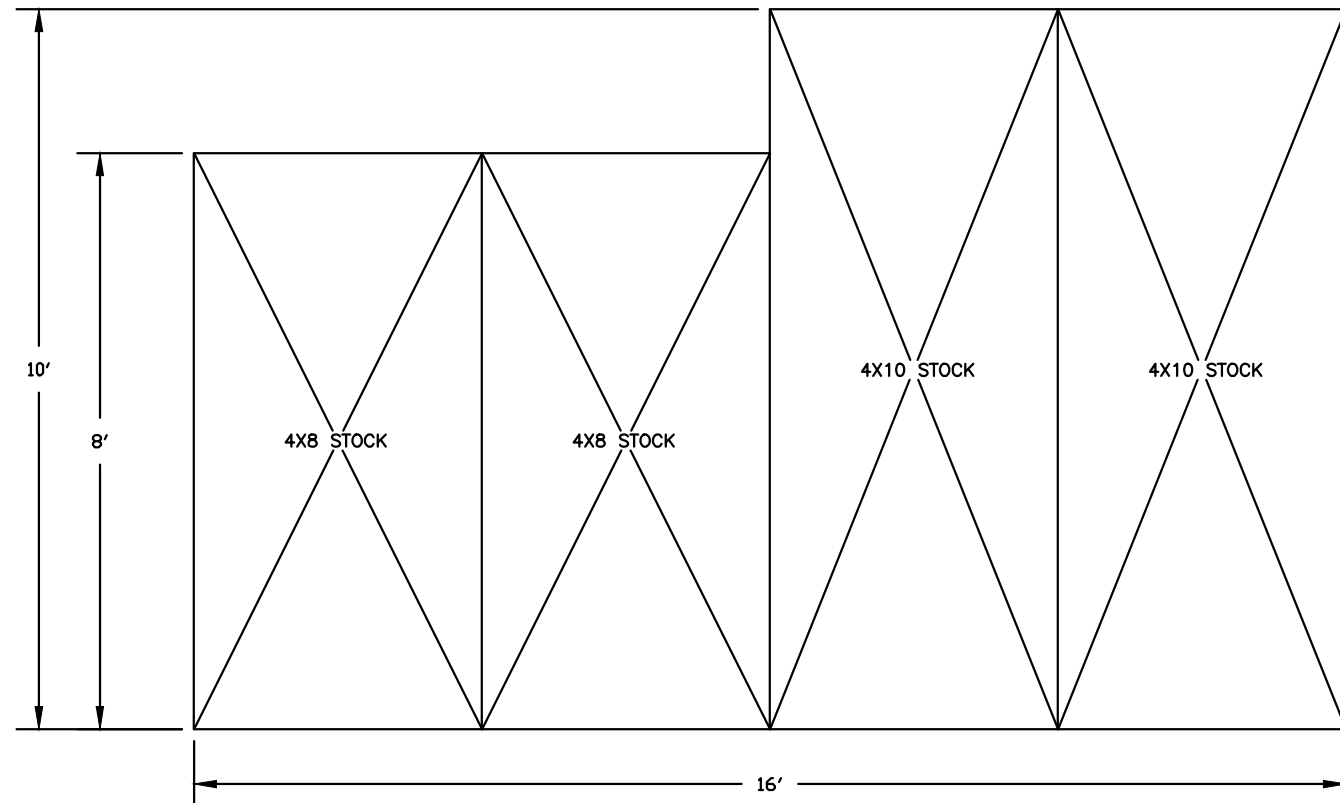


TT WALL A
DOOR WALL
BACK VIEW
BUILD 2

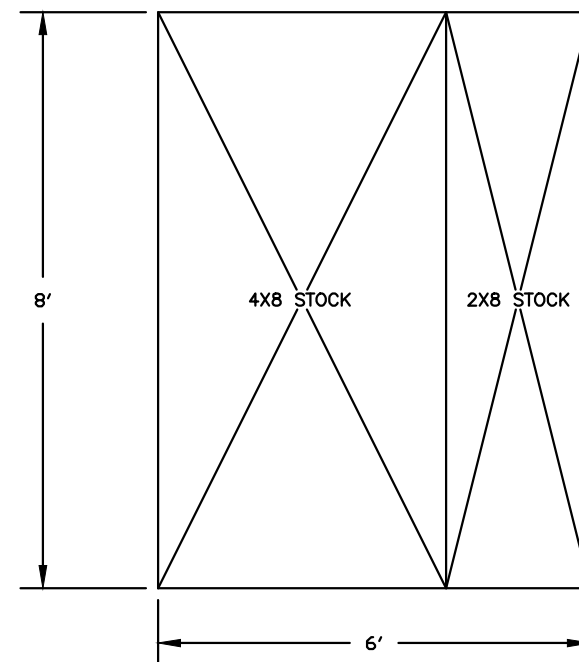
MATCH ANGLE OF EXISTING DOORS

- NOTES:
- FRAME IS 1X4 HOLLYWOOD STYLE FLATS
 - COVER WITH LAUAN ON BOTH SIDES.
 - CUT ANGLE FOR WALL A TO MATCH DOORS.
 - JACK WALL IS BROADWAY STYLE FLAT.

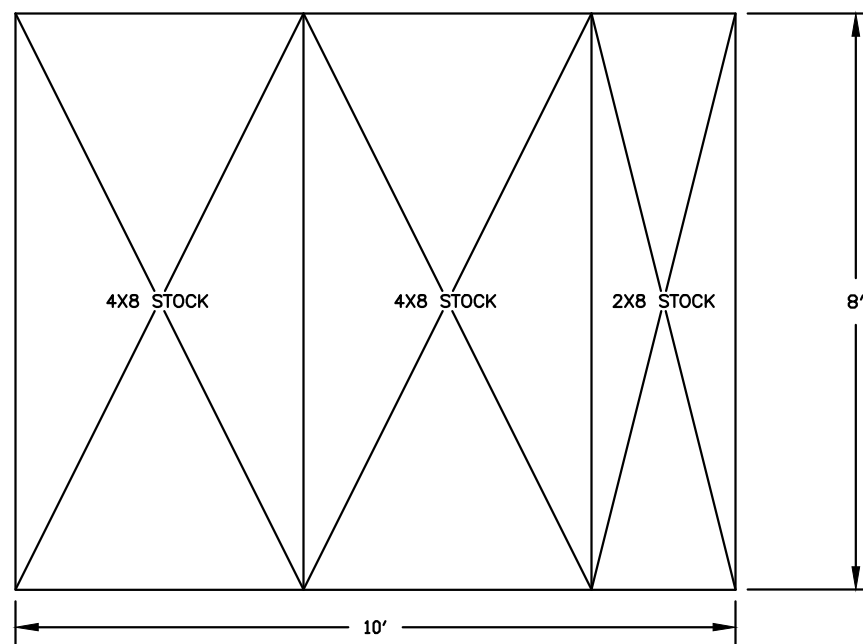
WEBER STATE UNIVERSITY	
<i>The Marriage of Figaro</i>	
TURNTABLE WALLS FRAMING	
DIR. KAREN BRUESTLE	DRAWING #
DES. BRYCE DALE ALLEN	D7B
T.D. CHRIS CARIGNAN	ELEVATION
DFT. BRYCE DALE ALLEN	DATE: 2/16/17
SCALE: 3/4" = 1'	APPROVED BY:



STAGE RIGHT
MASKING WALL
BUILD 1



TURNTABLE
MASKING WALL
BUILD 2



STAGE LEFT
MASKING WALL
BOOKCASE
BUILD 1

- NOTES:
- SEE NOTES ON DRAWING
 - ALL MASKING WALLS PULLED FROM STOCK
 - PULL 6 — 4'X8' STOCK FLATS
 - PULL 2 — 4'X10' STOCK FLATS
 - PULL 3 — 2'X8' STOCK FLATS
 - BRACE AS NEEDED
 - JACK AS NEEDED
 - THE STAGE LEFT WALL IIS GOING TO LOOK LIKE A BOOK CASE. BUILT OR PAINT IS TBD.

WEBER STATE UNIVERSITY	
<i>The Marriage of Figaro</i>	
MASKING WALLS	
DIR. KAREN BRUESTLE	DRAWING # D8
DES. BRYCE DALE ALLEN	
T.D. CHRIS CARIGNAN	
DFT. BRYCE DALE ALLEN	ELEVATION 2/16/17
SCALE: 3/8" = 1'	
APPROVED BY:	